



SPARE PARTS High-Speed Granulator :

SMG



Dryer

Conveyer

Temperature
Controller

Chiller

Blender

Granulator

Solution &
Option Parts



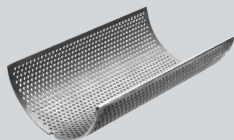
LIMIT SWITCH

CODE NO.	PART NAME	MACHINE MODEL	PRICE (THB)
-	LIMIT SWITCH TZ-7311	SMG-030	-
-	LIMIT SWITCH TZ-7310	SMG-030,050	-



CASTER

CODE NO.	PART NAME	MACHINE MODEL	PRICE (THB)
-	CASTER (FIXED)2-4608-443	SMG-030,050	-
-	CASTER (WITH LOCK)22-4646-443	SMG-030,050	-



SCREENING PLATE

CODE NO.	PART NAME	MACHINE MODEL	PRICE (THB)
-	SCREENING PLATE DIA.6mm (SUS304)	SMG-030	-
-	SCREENING PLATE DIA.8mm (SUS304)	SMG-030	-
108029	SCREENING PLATE DIA.6mm (SUS304)	SMG-050	-
108513	SCREENING PLATE DIA.8mm (SUS304)	SMG-050	-



ROTARY CUTTER

CODE NO.	PART NAME	MACHINE MODEL	PRICE (THB)
-	ROTARY CUTTER 200 x 52 x t12mm. (3 PCS)	SMG-030	-
107800	ROTARY CUTTER 200 x 52 x t12mm. (6 PCS)	SMG-050	-

Dryer

Conveyer

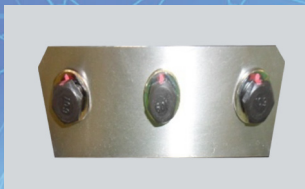
Temperature
Controller

Chiller

Blender

Granulator

Solution &
Option Parts



STATIONARY CUTTER

CODE NO.	PART NAME	MACHINE MODEL	PRICE (THB)
-	STATIONARY CUTTER 400x65xT2.0 (2PCS)	SMG-030	-
102061	STATIONARY CUTTER 400x65xT2 (2PCS)	SMG-050	-



KNOB BOLT LOCK

CODE NO.	PART NAME	MACHINE MODEL	PRICE (THB)
-	BOLT LOCK - MB10*35L/M10*57L	SMG-030	-
-	BOLT LOCK - MB10*80L	SMG-050	-



GEAR MOTOR

CODE NO.	PART NAME	MACHINE MODEL	PRICE (THB)
-	GEAR MOTOR : HE2-100L1-4 ,(2.2KW, 4 POLE) 200V,50HZ	SMG-030	-
-	GEAR MOTOR : HE2-100L1-4 ,(2.2KW, 4 POLE) 380V50Hz	SMG-030	-
-	GEAR MOTOR : HE2-112M-4 ,(4.0KW, 4 POLE) 200V,50HZ	SMG-050	-
-	GEAR MOTOR : HE2-112M-4 ,(4.0KW, 4 POLE) 380V50HZ	SMG-050	-



BEARING

CODE NO.	PART NAME	MACHINE MODEL	PRICE (THB)
115036	BEARING 6210ZZ (2 PCS)	SMG-30	-
104685	BEARING UCC212 (ASAHI) (2 PCS)	SMG-50	-



BELT

CODE NO.	PART NAME	MACHINE MODEL	PRICE (THB)
-	V BELT - A-1473	SMG-30	-
-	V-BELT - B-1778	SMG-50	-



OIL SEAL

CODE NO.	PART NAME	MACHINE MODEL	PRICE (THB)
-	OIL SEALMENT - BF42628/NBR=1PCS	SMG-30	-



CASTER

CODE NO.	PART NAME	MACHINE MODEL	PRICE (THB)
-	CASTER (FIXED) : 2-4608-443 , 4" (COLSON)	SMG-30-50	-
-	CASTER (FREE+ BREAK) : 22-4646-443 , 4" (COLSON)	SMG-30-50	-