



SPARE PARTS
Dehumidifying Dryer :

MJ5-i



Dryer

Conveyor

Temperature
Controller

Chiller

Blender

Granulator

Solution &
Option Parts



BLOWER

CODE NO.	PART NAME	MACHINE MODEL	PRICE (THB)
115682	RING BLOWER RB20-520 AC200-240/380-440V, 50Hz/60Hz (HO-HSING) REGENERATION	MJ5-i-150~350	-
102781	RING BLOWER RB30-520 AC200-240/380-440V, 50Hz/60Hz (HO-HSING) REGENERATION	MJ5-i-650	-
100171	RING BLOWER RB40-520 AC200-240/380-440V, 50Hz/60Hz (HO-HSING) DRYING	MJ5-i-1500	-
102782	RING BLOWER RB60-520 AC200-240/380-440V, 50Hz/60Hz (HO-HSING) DRYING	MJ5-i-1500	-
100173	RING BLOWER RB40-620 AC200-240/380-440V, 50Hz/60Hz (HO-HSING) CONVEYING	MJ5-i-150~650	-
115443	RING BLOWER RB50-620 AC200-240/380-440V, 50/60Hz (HO-HSING) CONVEYING	MJ5-i-1500	-



SHEATH HEATER

CODE NO.	PART NAME	MACHINE MODEL	PRICE (THB)
118430	(No.5) 2.1-2.54 KW/Y/200-220V DWG.B05294 (DRYING)	MJ5-i-150	-
118431	(No.6) 2.1-2.5KW/Y/380-415V (SUS) DWG.B05294 (DRYING)	MJ5-i-150	-
118568	(No.9) 2.4-2.9KW/Y/200-220V (SUS) DWG.B094 (DRYING)	MJ5-i-350	-
118569	(No.10) 2.4-2.86KW/Y/380-415V (SUS) DWG.B05294 (DRYING)	MJ5-i-350	-
118605	(No.9) 5.4-6.53KW/Y/200-220V (SUS) DWG.B03429 (DRYING)	MJ5-i-650	-
118606	(No.11) 5.4-6.43KW/Y/380-415V (SUS) DWG.B03429 (DRYING)	MJ5-i-650	-
121476	(No.1) 10.8-13.1KW/Y/200-220V (SUS) DWG.B50756 (DRYING)	MJ5-i-1500	-
120526	(No.3) 10.8-12.9KW/Y/380-415V (SUS) DWG.B50756 (DRYING)	MJ5-i-1500	-
118436	(No.1) 1.0-1.21KW/Y/200-220V (SUS) DWG.B05294 (REGENERATION)	MJ5-i-150	-
118437	(No.2) 1.0-1.2KW/Y/380-415V (SUS) DWG.B0529 (REGENERATION)	MJ5-i-150	-
118430	(No.5) 2.1-2.54KW/Y/200-220V (SUS) DWG.B05294 (REGENERATION)	MJ5-i-350	-
118431	(No.6) 2.1-2.5KW/Y/380-415V (SUS) DWG.B05294 (REGENERATION)	MJ5-i-350	-
118612	(No.1) 3.1-3.75KW/Y/200-220V (SUS) DWG.B03429 (REGENERATION)	MJ5-i-650	-
118613	(No.3) 3.1-3.69KW/Y/380-415V (SUS) DWG.B03429 (REGENERATION)	MJ5-i-650	-
121487	(No.13) 5.8-7.02KW/Y/200-220V (SUS) DWG.B03429 (REGENERATION)	MJ5-i-1500	-
120525	(No.15) 5.8-6.9KW/Y/380-415V (SUS) DWG.B03429 (REGENERATION)	MJ5-i-1500	-



PUSH DAMPER UNIT

CODE NO.	PART NAME	MACHINE MODEL	PRICE (THB)
118547	PUSH DAMPER UNIT PD3-DIA.38 DWG.028452_9 (MJ5-i-150, 350, 650A/U)	MJ5-i-150~650	-
121510	PUSH DAMPER UNIT PD3-DIA.50 DWG.028452_9 (MJ5-i-1500A/U)	MJ5-i-1500	-



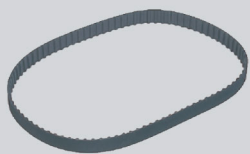
LEVEL SWITCH

CODE NO.	PART NAME	MACHINE MODEL	PRICE (THB)
100842	LEVEL SWITCH HL-400 L=85mm AC200, 220V (TOWA)	MJ5-i-150~650	-
101051	LEVEL SWITCH HL-400H L=85mm AC200, 220V (TOWA)	MJ5-i-150~650	-



GEAR MOTOR

CODE NO.	PART NAME	MACHINE MODEL	PRICE (THB)
-	GEAR MOTOR : G8XH10+G8XH10+G836K - A8M25B2 ,25W,1Ø, WITH PULLEY (AC110V,50/60Hz)	MJ5-i-150~650	-
-	GEAR MOTOR : G8XH10+G8120K - A8M25B2 ,25W,1Ø, WITH PULLEY (AC110V,50/60Hz)	MJ5-i-1500	-



TIMING BELT

CODE NO.	PART NAME	MACHINE MODEL	PRICE (THB)
107418	TIMING BELT 345xL100 FOR DMZ2-40, MJ3-10, 15, 25A	MJ5-i-150, 350	-
109760	TIMING BELT 367xL100 FOR DMZ2-80, 120, MJ3-50, 75, 100, 150A	MJ5-i-650	-
107422	TIMING BELT 435xL100 FOR DMZ2-170, 240, MJ3-200A	MJ5-i-1500	-



2-DIRECTION VALVE

CODE NO.	PART NAME	MACHINE MODEL	PRICE (THB)
118548	2-DIRECTION MATERIAL (2VN-DIA.38) With SOLENOID VALVE DWG.B05778_4	MJ5-i-150~650	-
121511	2-DIRECTION MATERIAL (2VN-DIA.63) With SOLENOID VALVE DWG.B50809	MJ5-i-1500	-



PACKING

CODE NO.	PART NAME	MACHINE MODEL	PRICE (THB)
	For Hopper dryer door		
117234	DOOR PACKING : T3 (SILICON,White) DWG.044081	MJ5-i-150	-
118561	DOOR PACKING : T3 (SILICON,White) DWG.044511	MJ5-i-350	-
118598	DOOR PACKING : T3 (SILICON,White) DWG.044530	MJ5-i-650	-
121656	DOOR PACKING : T3 (SILICON,White) DWG.B50748	MJ5-i-1500	-
	For Hopper dryer lid		
118252	LID PACKING : DIA.300 x DIA.280 x t3 DWG.B09259	MJ5-i-150	-
118251	LID PACKING : DIA.426 x DIA.406 x t3 DWG.B05200	MJ5-i-350	-
118250	LID PACKING : DIA.550 x DIA.530 x t3 DWG.B12502	MJ5-i-650	-
	For Drying filter & Dust box		
118064	U TYPE PACKING (SILICON RUBBER) DWG.843969	MJ5-i-150~1500	-



REGENERATION FILTER FOR BLOWER

CODE NO.	PART NAME	MACHINE MODEL	PRICE (THB)
106448	SUCTION FILTER (FILLEDON) DIA.150 x t10 DWG. 681893	MJ5-i-150~350	-
118610	SUCTION FILTER (Dia.190x14) DWG.130050_5	MJ5-i-650~1500	-



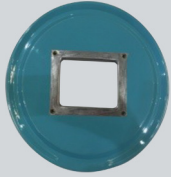
CARTRIDGE FILTER

CODE NO.	PART NAME	MACHINE MODEL	PRICE (THB)
101247	CARTRIDGE FILTER MXF-16SP-G1 DWG.847531 (DRYING, CONVEYING)	MJ5-i-150~1500	-



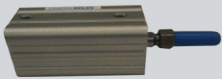
SOLENOID FOR SELECTOR VALVE

CODE NO.	PART NAME	MACHINE MODEL	PRICE (THB)
113137	SOLENOID VALVE 4V110-06-B-G (DC24V Single coil) (PS) 5/2 WAY (AIRTAC) (FOR DAMPER AND PORT VALVE)	MJ5-i-150~650	-



HOPPER LID

CODE NO.	PART NAME	MACHINE MODEL	PRICE (THB)
118419	HOPPER LID SETTING JC-3,6 DWG.B11184	MJ5-i-150	-
118560	HOPPER LID SETTING JC-9,18 DWG.B19363	MJ5-i-350	-
118597	HOPPER LID SETTING JC-9,18 DWG.B19969	MJ5-i-650	-



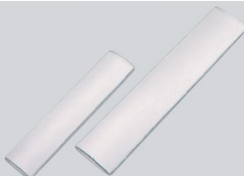
COMPACT CYLINDER

CODE NO.	PART NAME	MACHINE MODEL	PRICE (THB)
108541	COMPACT CYLINDER SSD2-20-30-N (CKD)	MJ5-i-150~650	-
105219	COMPACT CYLINDER SSD2-25-30-N11WF15 (CKD)	MJ5-i-150~650	-



THERMOCOUPLE

CODE NO.	PART NAME	MACHINE MODEL	PRICE (THB)
122639	THERMOCOUPLE TYPE K, CLASS 1, SK (316) OD3.2 L:100MM, L:3M	MJ5-i-150~350	-
122632	THERMOCOUPLE TYPE K, CLASS 1, SK OD3.2 L:80+25MM(70+15)L:3.5M	MJ5-i-150~350	-
122640	THERMOCOUPLE TYPE K, CLASS 1, SK (316) OD3.2 L:100MM, L:3.5M	MJ5-i-650	-
122633	THERMOCOUPLE TYPE K, CLASS 1, SK OD3.2 L:80+25MM (70+15)L:4.5M (GLASS WOOL+SUS SHIELD) *PLIC THERMO	MJ5-i-1500	-
101137	RING JOINT RJ3.2x1/4B (THROUGH TYPE)	MJ5-i-150~1500	-



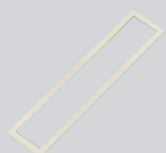
LEVEL GLASS

CODE NO.	PART NAME	MACHINE MODEL	PRICE (THB)
100023	GLASS 50 x 220 x T3.0 (R150) DWG.140057_3	MJ5-i-150	-
100024	GLASS 65x315xT3.0 R200 DWG.527188_8	MJ5-i-350	-
103018	GLASS 65x315xT3.0 R266 DWG.527188_8	MJ5-i-650	-
100298	"GLASS 65x315xT3.0 R409 DWG.527188_8 "	MJ5-i-1500	-



GLASS FRAME

CODE NO.	PART NAME	MACHINE MODEL	PRICE (THB)
100027	GLASS FRAME DWG.130030_2	MJ5-i-150	-
100028	GLASS FRAME DWG.527189_9	MJ5-i-350~1500	-



GLASS HOLDER PACKING

CODE NO.	PART NAME	MACHINE MODEL	PRICE (THB)
117234	GLASS HOLDER PACKING DWG.874326 (SILICONE RUBBER) (HD2-10/15, MJ3-15/25, MGD-15/25, MJ5-i-150)	MJ5-i-150	-
117242	GLASS HOLDER PACKING DWG.874383 (SILICON RUBBER)	MJ5-i-350~1500	-

Dryer

Conveyer

Temperature
Controller

Chiller

Blender

Granulator

Solution &
Option Parts

Dryer

Conveyor

Temperature
Controller

Chiller

Blender

Granulator

Solution &
Option Parts

THERMOSTAT CAP

CODE NO.	PART NAME	MACHINE MODEL	PRICE (THB)
116103	THERMOSTAT CAP (CERAMIC) DWG.B17441_1	MJ5-i-150~650	-



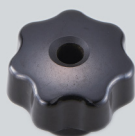
THERMOSTAT

CODE NO.	PART NAME	MACHINE MODEL	PRICE (THB)
118429	THERMOSTAT TR711/N220DT-CU-2000-HD2CASE + 1/4S, +BOX UNIT DWG.B89008	MJ5-i-150~1500	-
100010	THERMOSTAT BOX DWG.755849	MJ5-i-150~1500	-
-	THERMOSTAT : TR711/N220DT , TEMP. 40~220°C RING JOINT FOR TR711/N, R1/4 (ITEM No. 1,3,4, 5)	MJ5-i-150~1500	-
117573	DWG.755583 (THERMOSTAT)	MJ5-i-150~1500	-



PROXIMITY SWITCH

CODE NO.	PART NAME	MACHINE MODEL	PRICE (THB)
103704	PROXIMITY SWITCH E2K-C25ME1-8 (NO) DC12-24V (OMRON)	MJ5-i-150~1500	-
101080	PROXIMITY SWITCH E2K-C25ME2-8(10) DC-12-24V (NC) (OMRON)	MJ5-i-150~1500	-
104022	PROXIMITY SWITCH E2K-C25MY1-8 (NO) AC-90-250V (OMRON)	MJ5-i-150~650	-
109888	PROXIMITY SWITCH E2K-C25MY2 (NC) AC-90-220V (OMRON)	MJ5-i-150~650	-



KNOB

CODE NO.	PART NAME	MACHINE MODEL	PRICE (THB)
118483	PLASTIC SIX LOBE KNOB : KGF-40 x M6 (NBK)	MJ5-i-150~1500	-



INVERTER

CODE NO.	PART NAME	MACHINE MODEL	PRICE (THB)
116057	INVERTER : VFS15-2004PM (TOSHIBA) (AC200-240V.)	MJ5-i-150	-
118537	INVERTER : VFS15-4004PL1 (TOSHIBA) (AC380-480V.)	MJ5-i-150	-
118577	INVERTER : VFS15-2007PM (TOSHIBA) (AC200-240V.)	MJ5-i-350	-
118579	INVERTER : VFS15-4007PL1 (TOSHIBA) (AC380-480V.)	MJ5-i-350	-
118632	INVERTER : VFS15-2015PM (TOSHIBA) (AC200-240V.)	MJ5-i-650	-
103863	INVERTER : VFS15-4015PL1 (TOSHIBA) (AC380-480V.)	MJ5-i-650	-
121950	INVERTER : VFS15-2037PM (TOSHIBA) (AC200-240V.)	MJ5-i-1500	-
122050	INVERTER : VFS15-4037PL1 (TOSHIBA) (AC380-480V.)	MJ5-i-1500	-



SOLID STATE RELAY

CODE NO.	PART NAME	MACHINE MODEL	PRICE (THB)
111870	SOLID STATE RELAY G3PE-225B (DC12-24V) OMRON (AC200-240V.)	MJ5-i-150~650	-
119632	SOLID STATE RELAY G3PE-515B (DC12-24V) OMRON (AC380-480V.)	MJ5-i-150~650	-
115897	SOLID STATE RELAY G3PE-235B (DC12-24V) OMRON (AC200-240V.)	MJ5-i-650~1500	-
108386	SOLID STATE RELAY G3PE-525B (DC12-24V) OMRON (AC380-480V.)	MJ5-i-650~1500	-



AIR VALVE

CODE NO.	PART NAME	MACHINE MODEL	PRICE (THB)
107226	AIR FILTER REGULATOR AFR2000-1 (AIRTAC)	MJ5-i-150~1500	-



DIFFUSER

CODE NO.	PART NAME	MACHINE MODEL	PRICE (THB)
118418	DIFFUSER DWG.040705	MJ5-i-150	-
118559	DIFFUSER DWG.044509	MJ5-i-350	-
118596	DIFFUSER DWG.044529	MJ5-i-650	-
100181	DIFFUSER DWG.131377_8	MJ5-i-1500	-
103187	DIFFUSER STOPPER DWG.163566	MJ5-i-150	-
100103	DIFFUSER STOPPER DWG.527187	MJ5-i-350~650	-



COOLING FAN

CODE NO.	PART NAME	MACHINE MODEL	PRICE (THB)
103486	FAN R87F-A1A15HP AC100V (OMRON)	MJ5-i-150~350	-
118625	FAN R87T-A1A05H AC100V (OMRON)	MJ5-i-650	-



CATCH CLIP

CODE NO.	PART NAME	MACHINE MODEL	PRICE (THB)
100009	CATCH CLIP C-7-1 WITH ARM (HOPPER LID)	MJ5-i-150~650	-
119808	CATCH CLIP : C-1232-2 DWG.M580003 (HOPPER DOOR)	MJ5-i-150~650	-



SUCTION PIPE

CODE NO.	PART NAME	MACHINE MODEL	PRICE (THB)
100602	SUCTION PIPE 38 MM (AL) DWG.038127	-	-
100603	SUCTION PIPE 50 MM (AL) DWG.038128	-	-
100604	SUCTION PIPE 63 MM (AL) DWG.038129	-	-
100706	SUCTION PIPE 38 MM (SUS) DWG.041241	-	-
100612	SUCTION PIPE 50 MM (SUS) DWG.041242	-	-
115192	SUCTION PIPE 63 MM (SUS) DWG.041243	-	-



HOSE COUPLING

CODE NO.	PART NAME	MACHINE MODEL	PRICE (THB)
100580	HOSE COUPLING 38MM	-	-
100581	HOSE COUPLING 63MM	-	-



HOSE CLAMP

CODE NO.	PART NAME	MACHINE MODEL	PRICE (THB)
101385	HOSE CLAMP DIA.45MM (FOR PVC HOSE 38.1mm.)	-	-
101388	HOSE CLAMP DIA.70MM (FOR PVC HOSE 63.50mm.)	-	-



HOSE BAND

CODE NO.	PART NAME	MACHINE MODEL	PRICE (THB)
101747	HOSE BAND 40-55 MM	-	-
105589	HOSE BAND 18-25MM	-	-



DUST HOPPER

CODE NO.	PART NAME	MACHINE MODEL	PRICE (THB)
109086	DUST HOPPER DWG.706713_3	-	-