



Dryer

Conveyer

Temperature Controller

Chiller

Blender

Granulator

Solution & Option Parts

SPARE PARTS Hot Air Dryer :

MGD



DRYING BLOWER

CODE NO.	PART NAME	MACHINE MODEL	PRICE (THB)
100001	BLOWER RS-205 AC200/380V (AKAMATSU DENKI)	MGD-15A	-
107351	BLOWER RS-205 AC415V 50 Hz (AKAMATSU DENKI)	MGD-15A	-
100003	BLOWER RS-301 AC200/380V (AKAMATSU DENKI)	MGD-25~50A	-
117248	BLOWER RS-301 AC220/380V, 50/60Hz (AKAMATSU DENKI)	MGD-25~50A	-
107170	BLOWER RS-301 AC415V 50Hz/60Hz (AKAMATSU DENKI)	MGD-25~50A	-
100004	BLOWER RS-302 AC200/380V (AKAMATSU DENKI)	MGD-75~100A	-
119236	BLOWER RS-302 AC415V (AKAMATSU DENKI)	MGD-75~100A	-
100005	BLOWER NB-5 AC220/380V 50/60HZ (NISHIMURA DENKI)	MGD-150~200A	-
120947	BLOWER NB-5 AC415V 50/60Hz (NISHIMURA DENKI)	MGD-150~200A	-
102649	BLOWER NK-5 AC220/380V 50/60Hz (NISHIMURA DENKI)	MGD-200~300A	-
121043	BLOWER NK-5 AC415V 50Hz (NISHIMURA DENKI)	MGD-200~300A	-



CONVEYING BLOWER

CODE NO.	PART NAME	MACHINE MODEL	PRICE (THB)
100173	RING BLOWER RB40-620 AC220/380V (HO-HSING)	MGD-15~150A	-
115443	RING BLOWER RB50-620 AC220/380V (HO-HSING)	MGD-200~300A	-



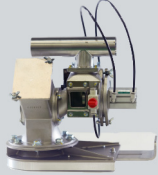
FILTER FOR BLOWER

CODE NO.	PART NAME	MACHINE MODEL	PRICE (THB)
100017	FILTER FOR BLOWER RS-205 (150mm x t18) DWG.009752	MGD-15A	-
100018	FILTER FOR BLOWER RS-300,301,302 (190MMxT18) DWG.009753	MGD-25~100A	-
100144	FILTER BLOWER 280MMxT18	MGD-150~300A	-



CARTRIDGE FILTER

CODE NO.	PART NAME	MACHINE MODEL	PRICE (THB)
101253	CARTRIDGE FILTER MXF-16SP-G4 DWG.190682	MGD-15~300A	-



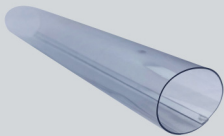
PUSH DAMPER UNIT

CODE NO.	PART NAME	MACHINE MODEL	PRICE (THB)
122569	PUSH DAMPER UNIT PD3-DIA.38 (A-TYPE) DWG.028452_9	MGD-15~150A	-
122570	PUSH DAMPER UNIT PD3-DIA.50 (A-TYPE) DWG.028452_9	MGD-200~300A	-



EXHAUST FILTER

CODE NO.	PART NAME	MACHINE MODEL	PRICE (THB)
108509	EXHAUST FILTER 360x250xT18 DWG.734444	MGD-15~25A	-
100300	EXHAUST FILTER 490x375xT18 DWG.734444	MGD-50~100A	-
100299	EXHAUST FILTER 490x635xT18 DWG.734444	MGD-150~300A	-



DUST TUBE

CODE NO.	PART NAME	MACHINE MODEL	PRICE (THB)
100016	PVC HOSE DIA.50.8MM x L300MM (TRANSPARENT)	MGD-15~300A	-



CAP/SOCKET

CODE NO.	PART NAME	MACHINE MODEL	PRICE (THB)
115863	PVC SOCKET 1 1/4B	MGD-15~300	-
105247	PVC CAP 1 1/4B	MGD-15~300	-
100011	CAP-SOCKET (AL) DWG.165590 (MGD-15~300)	MGD-15~300	-



CYCLONE FILTER UNIT

CODE NO.	PART NAME	MACHINE MODEL	PRICE (THB)
117477	CYCLONE FILTER UNIT DIA.38 DWG.189400 (JL4-4,5VC, VC-2, MGD-15~150) *MAC	MGD-15~150A	-
117478	CYCLONE FILTER UNIT DIA.63 DWG.189400 (JL4-6,7VC, VC-2, MGD-200~300) *MAC	MGD-200~300A	-



DUST HOPPER

CODE NO.	PART NAME	MACHINE MODEL	PRICE (THB)
109086	DUST HOPPER DWG.706713	MGD-15~300A	-



2-DIRECTION VALVE

CODE NO.	PART NAME	MACHINE MODEL	PRICE (THB)
117172	2-DIRECTION MATERIAL (2VN-DIA.38) With SOLENOID VALVE DWG.031208 *MAC	MGD-15~150A	-
117256	2-DIRECTION MATERIAL (2VN-DIA.63) With SOLENOID VALVE DWG.049314*MAC	MGD-200~300A	-

Dryer

Conveyor

Temperature
Controller

Chiller

Blender

Granulator

Solution &
Option Parts

Dryer

Conveyor

Temperature Controller

Chiller

Blender

Granulator

Solution & Option Parts



SOLENOID VALVE

CODE NO.	PART NAME	MACHINE MODEL	PRICE (THB)
108994	SOLENOID VALVE 4V110-06-A-G (AC220V) (PS) (AIRTAC)	MGD-15~300A	-
105706	SOLENOID VALVE (SMC)SY3120-2G-C6-F2	MGD-15~150A	-



COMPACT CYLINDER

CODE NO.	PART NAME	MACHINE MODEL	PRICE (THB)
117208	COMPACT CYLINDER CQSBS25C-W4842-25 (SMC)	MGD-15~150A	-
	(USE FOR TWO PORT)		
117210	COMPACT CYLINDER CQ2B32-W1T242-45DCZ	MGD-200~300A	-
	(SPECIAL ROD) (SMC) (USE FOR TWO PORT)		
108541	COMPACT CYLINDER SSD2-20-30-N (CKD)	MGD-15~300A	-
	(MADE IN CHINA)(USE FOR PUSH DAMPER)		



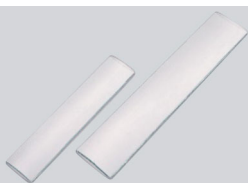
THERMOCOUPLE

CODE NO.	PART NAME	MACHINE MODEL	PRICE (THB)
122613	THERMOCOUPLE TYPE K, CLASS 1, DIA.3.18 x 100 x 3000L	MGD-15~300A	-
	(PLIC THERMO)		
101137	RING JOINT RJ3.2x1/4B (THROUGH TYPE) (MJ CODE 08465)	MGD-15~300A	-



THERMOSTAT

CODE NO.	PART NAME	MACHINE MODEL	PRICE (THB)
103501	THERMOSTAT TR711/N220, M12 x P1 x L930	MGD-15~300A	-
100010	THERMOSTAT BOX DWG.755849	MGD-15~300A	-
101104	RING JOINT FOR TR711/N DWG.013795 (THERMOSTAT)	MGD-15~300A	-
109253	RUBEER NBR DIA.12 x t5.6	MGD-15~300A	-



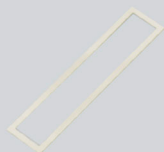
GLASS

CODE NO.	PART NAME	MACHINE MODEL	PRICE (THB)
100023	GLASS 50x220xT3.0 R-150 DWG.140057	MGD-15~25A	-
100024	GLASS 65x315xT3.0 R200 DWG.527188	MGD-50A	-
103018	GLASS 65x315xT3.0 R266 DWG.527188	MGD-75~100A	-
100297	GLASS 65x315xT3.0 R345 DWG.527188	MGD-150~200A	-
100298	GLASS 65x315xT3.0 R409 DWG.527188	MGD-250~300A	-



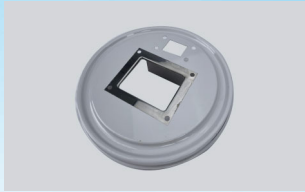
GLASS FRAME

CODE NO.	PART NAME	MACHINE MODEL	PRICE (THB)
100027	GLASS FRAME DWG.130030	MGD-15~25A	-
100028	GLASS FRAME DWG.527189	MGD-50~300A	-



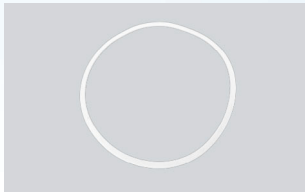
GLASS FRAME PACKING

CODE NO.	PART NAME	MACHINE MODEL	PRICE (THB)
117234	GLASS HOLDER PACKING DWG.874326 (SILICONE RUBBER)	MGD-15~25A	-
	(HD2-10/15, MJ3-15/25, MGD-15/25, MJ5-I-150)		
117242	GLASS HOLDER PACKING DWG.874383 (SILICON RUBBER)	MGD-15~300A	-



HOPPER LID

CODE NO.	PART NAME	MACHINE MODEL	PRICE (THB)
102946	HOPPER LID SETTING JC-3, 6 DWG.190867	MGD-15~25A	-
107722	HOPPER LID SETTING JC-3, 6 DWG.039522	MGD-50~75A	-
113134	HOPPER LID SETTING JC-9,18 DWG.190868_4	MGD-50~75A	-
115115	HOPPER LID SETTING JC-9, 18 DWG.190869_4	MGD-100~150A	-
102902	HOPPER LID SETTING JC-9,18 DWG.190872	MGD-200A	-
112355	HOPPER LID SETTING JC-9,18 DWG.190873	MGD-250~300A	-



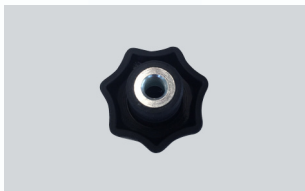
HOPPER LID PACKING

CODE NO.	PART NAME	MACHINE MODEL	PRICE (THB)
118252	HOPPER DRYER LID PACKING DIA.300 x DIA.280 x t3	MGD-15~25A	-
	DWG.B09259 (MGD, MJ3-15/25)		
118251	HOPPER DRYER LID PACKING DIA.426 x DIA.406 x t3	MGD-50~75A	-
	DWG.B05200 (MGD, MJ3-50/75) (CMC DWG.CB05200)		
118250	HOPPER DRYER LID PACKING DIA.550 x DIA.530 x t3	MGD-100~150A	-
	DWG.B12502 (MGD, MJ3-100/150) * CMC DWG.CB12502		



DIFFUSER

CODE NO.	PART NAME	MACHINE MODEL	PRICE (THB)
100246	DIFFUSER DWG.163565	MGD-15~25A	-
100247	DIFFUSER DWG.163589	MGD-50~75A	-
100248	DIFFUSER DWG.B26016	MGD-100~150A	-
102817	DIFFUSER DWG.131359	MGD-200A	-
100181	DIFFUSER with CONNECTION PORT DWG.131377,131366	MGD-250~300A	-
103187	DIFFUSER STOPPER MGD, MJ3-15/25 DWG.163566	MGD-15~25A	-
100103	DIFFUSER STOPPER DWG.527187	MGD-50~150A	-



KNOB

CODE NO.	PART NAME	MACHINE MODEL	PRICE (THB)
106151	KNOB NUTS M6	MGD-15~300A	-



CATCH CLIP

CODE NO.	PART NAME	MACHINE MODEL	PRICE (THB)
100550	CATCH CLIP P-31 with ARM DWG.162800 (JC)	MGD-15~300A	-
100009	CATCH CLIP C-7-1 WITH ARM (TOP LID)	MGD-15~300A	-
107723	CATCH CLIP C-7-2 (SPCC) (TAKIGEN) (PANEL DOOR)	MGD-15~300A	-
100007	CATCH CLIP C-1232-2(HOPPER DOOR)	MGD-15~300A	-



JL U-PACKING

CODE NO.	PART NAME	MACHINE MODEL	PRICE (THB)
100729	JL U-PACKING (BLACK) DWG.506054	MGD-15~300A	-

Dryer

Conveyer

Temperature Controller

Chiller

Blender

Granulator

Solution & Option Parts



TEMP. CONTROLLER

CODE NO.	PART NAME	MACHINE MODEL	PRICE (THB)
123085	CONTROLLER UNIT G4370 (DISPLAY BOARD G2841)	MJ3-15~300A	-
	FOR MJ3, MGD (MATSUI) WITH CONTACT&STICKER		
123088	STICKER OPERATION EXPLANATION (G4370)	MJ3-15~300A	-
	DWG.F27076 (MJ3, MGD)		



RELAY FOR TEMP. CONTROLLER

CODE NO.	PART NAME	MACHINE MODEL	PRICE (THB)
103822	RELAY : G6D-1A-ASI DC-12V (OMRON) for TEMP.G2422	MGD-15~300A	-



MAGNETIC CONTACTOR

CODE NO.	PART NAME	MACHINE MODEL	PRICE (THB)
120625	MAGNETIC CONTACTOR SC-03/T 1a AC220V (FUJI ELEC.)	MGD-15A	-
120627	MAGNETIC CONTACTOR SC-N3/T 2a2b AC220V (FUJI ELEC.)	MGD-250, 300 A	-
121800	MAGNETIC CONTACTOR SC-5-1/T AC200V 1a1b (FUJI ELEC.)	MGD-50,75,100A	-
122269	MAGNETIC CONTACTOR SC-05/T 1a AC220V (FUJI ELEC.)	MGD-25A	-
122715	MAGNETIC CONTACTOR SC-N2/T AC200V 2a2b (FUJI ELEC.)	MGD-150A	-
123115	MAGNETIC CONTACTOR SC-N2S/T 2a2b AC220V (FUJI ELEC.)	MGD-200A	-



MOTOR STARTER

CODE NO.	PART NAME	MACHINE MODEL	PRICE (THB)
123117	MOTOR STARTER : SW-03/3H/T 1a (0.1-0.15A) AC200V (FUJI ELEC.)	MGD-15A	-
123118	MOTOR STARTER : SW-03/3H/T 1a (0.15-0.24A) AC200V (FUJI ELEC.)	MGD-15A	-
123119	MOTOR STARTER : SW-03/3H/T 1a (0.3-0.45A) AC200V (FUJI ELEC.)	MGD-25-100A	-
123121	MOTOR STARTER SW-03/3H/T 1a (0.64-0.96A) AC200V (FUJI ELECTRIC)	MGD-25-100A	-
123122	MOTOR STARTER : SW-03/3H/T 1a (0.8-1.2A) AC200V (FUJI ELEC.)	MGD-150-200A	-
123124	MOTOR STARTER : SW-03/3H/T 1a (1.4-2.2A) AC200V (FUJI ELEC.)	MGD-150-300A	-
123126	MOTOR STARTER : SW-03/3H/T 1a (2.2-3.4A) AC200V (FUJI ELEC.)	MGD-15-150A	-
123128	MOTOR STARTER SW-03/3H/T 1a (4-6A) AC200V (FUJI ELECTRIC)	MGD-15-150A	-
123141	MOTOR STARTER : SW-5-1/3H/T 1a (7-11A) AC200V (FUJI ELEC.)	MGD-200-300A	-



AUXILIARY CONTACTOR

CODE NO.	PART NAME	MACHINE MODEL	PRICE (THB)
123151	AUXILIARY CONTACTOR SZ-A40/T (FUJI ELEC.)	MGD-15-300	-



AIR FILTER REGULATOR

CODE NO.	PART NAME	MACHINE MODEL	PRICE (THB)
103822	AIR FILTER REGULATOR AFR1500(PS) (AIRTAC)	-	-



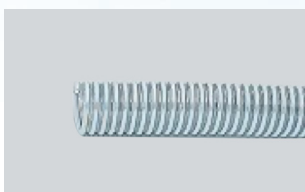
HAND VALVE

CODE NO.	PART NAME	MACHINE MODEL	PRICE (THB)
103067	FINGER VALVE VHK3-06F-04FR (SMC)	-	-



SOLID STATE RELAY

CODE NO.	PART NAME	MACHINE MODEL	PRICE (THB)
119134	SOLID STATE RELAY G3NA-210B-UTU AC100~240V (OMRON)	MGD-15A	-
102239	SOLID STATE RELAY G3NA-220B-UTU AC100~240V (OMRON)	MGD-25-50A	-
100985	SOLID STATE RELAY G3NA-240B-UTU AC100~240V (OMRON)	MGD-75-150A	-
101095	SOLID STATE RELAY SS301-5Z-A4 AC200~220V (FUJI ELEC.)	MGD-200-300A	-
101096	SOLID STATE RELAY SS501-5Z-A4 AC200~220V (FUJI ELEC.)	MGD250-300A	-
103747	SOLID STATE RELAY G3NA-410B-UTU AC100~240V (OMRON)	MGD-15-25A	-
100994	SOLID STATE RELAY G3NA-420B-UTU AC100~240V (OMRON)	MGD-50-300A	-
116618	SOLID STATE RELAY G3NA-440B-UTU-2 I/P AC100-240V (OMRON)	MGD-250-300A	-



TIFLEX HOSE

CODE NO.	PART NAME	MACHINE MODEL	PRICE (THB)
107754	TIFLEX HOSE ANTISTATIC W Type DIA.38mm	-	-
	(TIGERS POLYMER)(W-38)(20M.)		
116599	TIFLEX HOSE ANTISTATIC W Type DIA.50mm	-	-
	(TIGERS POLYMER)(W-50)(20M.)		
103756	TIFLEX HOSE ANTISTATIC W Type DIA.65mm	-	-
	(TIGERS POLYMER)(W-65)(20M.)		



GL HOSE

CODE NO.	PART NAME	MACHINE MODEL	PRICE (THB)
100573	GL HOSE DIA. 38.10 mm.(20M.)	-	-
100574	GL HOSE DIA. 63.50 mm.(20M.)	-	-



HOSE CLAMP

CODE NO.	PART NAME	MACHINE MODEL	PRICE (THB)
101385	HOSE CLAMP (FOR PVC HOSE 38.1mm.)	-	-
101388	HOSE CLAMP (FOR PVC HOSE 63.50mm.)	-	-



HOSE COUPLING

CODE NO.	PART NAME	MACHINE MODEL	PRICE (THB)
100580	HOSE COUPLING 38MM	-	-
100581	HOSE COUPLING 63MM	-	-



SUCTION PIPE

CODE NO.	PART NAME	MACHINE MODEL	PRICE (THB)
100602	SUCTION PIPE 38 MM (AL) DWG.038127	-	-
100603	SUCTION PIPE 50 MM (AL) DWG.038128	-	-
100604	SUCTION PIPE 63 MM (AL) DWG.038129	-	-
100706	SUCTION PIPE 38 MM (SUS) DWG.041241	-	-
100612	SUCTION PIPE 50 MM (SUS) DWG.041242	-	-
115192	SUCTION PIPE 63 MM (SUS) DWG.041243	-	-

Dryer

Conveyer

Temperature
Controller

Chiller

Blender

Granulator

Solution &
Option Parts



SHEATH HEATER

CODE NO.	PART NAME	MACHINE MODEL	PRICE (THB)
116896	SHEATH HEATER 1.5KW,SUS (DELTA) DWG.131336 AC200V	MGD-15A	-
116897	SHEATH HEATER 1.5KW,NICKEL (STAR/DELTA) DWG.131336 AC380/220V	MGD-15A	-
122869	SHEATH HEATER 1.5KW, (STAR) AC415V DWG.131336 (PLIC THERMO)	MGD-15A	-
116898	SHEATH HEATER 3.6KW,SUS (DELTA) DWG.536675 AC200V	MGD-25A	-
116899	SHEATH HEATER 3.6KW,SUS (STAR/DELTA) DWG.536675 AC380/220V	MGD-25A	-
121038	SHEATH HEATER 3.6KW, (STAR) AC415V DWG.536675	MGD-25A	-
116877	SHEATH HEATER 4.05KW,SUS (DELTA) DWG.536675 AC200V	MGD-50A	-
116833	SHEATH HEATER 4.05KW,SUS (STAR/DELTA) DWG.536675 AC380/220V	MGD-50A	-
122414	SHEATH HEATER 4.05KW (STAR) AC415V DWG.536675 *PLIC THERMO	MGD-50A	-
116900	SHEATH HEATER 5.4KW (DELTA) AC200V DWG.536675	MGD-75A	-
116901	SHEATH HEATER 5.4KW,SUS (STAR/DELTA) DWG.536675 AC380/220V	MGD-75A	-
119385	SHEATH HEATER 5.4kW (STAR) AC415V DWG.536675	MGD-75A	-
116902	SHEATH HEATER 6.3KW,SUS (DELTA) DWG.536675 AC200V	MGD-100A	-
116820	SHEATH HEATER 6.3KW, NICKEL (STAR/DELTA) DWG.536675 AC380/220V	MGD-100A	-
121039	SHEATH HEATER 6.3KW, (STAR) AC415V DWG.536675	MGD-100A	-
116838	SHEATH HEATER 10.8KW,NICKEL (DELTA) DWG.536676 AC200V	MGD-150A	-
116821	SHEATH HEATER 10.8KW, NICKEL (STAR) DWG.536676 AC380/220V	MGD-150A	-
121036	SHEATH HEATER 10.8KW (STAR) AC415V DWG.536676	MGD-150A	-
116906	SHEATH HEATER 12.42KW,NICKEL (DELTA) DWG.536676 AC200V	MGD-200A	-
116830	SHEATH HEATER 12.42KW, NICKEL (STAR/DELTA) DWG.536676 AC380/220V	MGD-200A	-
121040	SHEATH HEATER 12.42KW, (STAR) AC415V DWG.536676	MGD-200A	-
116909	SHEATH HEATER 17.1KW,NICKEL (DELTA) AC200V DWG.536677 AC200V	MGD-250-300A	-
116910	SHEATH HEATER 17.1KW,NICKEL (STAR/DELTA) DWG.536677 AC380/220V	MGD-250-300A	-
121041	SHEATH HEATER 17.1KW (STAR) AC415V DWG.536677	MGD-250-300A	-

Dryer

Conveyer

Temperature
Controller

Chiller

Blender

Granulator

Solution &
Option Parts