



SPARE PARTS

Gravimetric Blender
(Weight addition Type)

JCW2



JCW2-i-053



JCW2-103-APH-J



SOLENOID

CODE NO.	PART NAME	MACHINE MODEL	PRICE (THB)
-	SOLENOID VALVE SY3120-5L0-C6(SMC)AC220V.(MJ.CODE25941)	JCW2-i-05	-
114893	SOLENOID VALVE SY3120-2G-C4-F2(SMC)AC220V.(MJ.CODE20374)	JCW2	-
109041	SOLENOID VALVE SY3120-2L-C6(SMC)AC220V.	JCW2	-
-	SOLENOID VALVE SY3220-2L-C6(SMC)AC220V.(MJ.CODE25953)	JCW2	-



CARTRIDGE FILTER

CODE NO.	PART NAME	MACHINE MODEL	PRICE (THB)
101253	CARTRIDGE FILTER MXF-16SP-G4 DWG.190682	JCW2-i-05	-



GEAR MOTOR

CODE NO.	PART NAME	MACHINE MODEL	PRICE (THB)
-	GEAR MOTOR GM-SHYM-RR 0.1KW 1/15 AC200V.(MJ.CODE25937)	JCW2-i-05	-
-	GEAR MOTOR GFM-12-10-T40 AC200V.(MJ.CODE25938)	JCW2-i-05	-
-	GEAR MOTOR G3KM-18-20-T010A AC200V.(MJ.CODE25286)	JCW2-10	-
-	GEAR MOTOR G3KM-18-20-T020A AC200V.(MJ.CODE25287)	JCW2-20,30	-
-	GEAR MOTOR G3KM-22-25-T040A AC200V.(MJ.CODE25936)	JCW2-60,90	-
11182	MOTOR CSK264-AP-SG10 with GEAR 1:10 (ORIENTAL)	JCW2-10,20	-

Dryer

Conveyer

Temperature
Controller

Chiller

Blender

Granulator

Solution &
Option Parts

Dryer



MAGNETIC CONTRACTOR

CODE NO.	PART NAME	MACHINE MODEL	PRICE (THB)
-	MAGNETIC CONTACTOR SD-Q11 1A DC24V (MITSUBISHI)	JCW2-i-05	-
107869	MAGNETIC CONTACTOR S-T10 AC200V (MITSUBISHI)	JCW2-10,20	-
107989	AUXILIARY CONTACT UT-AX2 (2a) (MITSUBISHI)	JCW2-10,20	-

Conveyor



RELAY

CODE NO.	PART NAME	MACHINE MODEL	PRICE (THB)
102923	RELAY G2R-2SN DC24V (OMRON)	JCW2-10,20	-
102921	SOCKET P2RFZ-08-E (OMRON)	JCW2-10,20	-

Temperature Controller



PROXIMITY SWITCH

CODE NO.	PART NAME	MACHINE MODEL	PRICE (THB)
111184	PROXIMITY SWITCH E2E-X1R5E1 2M(DC12-24V)	JCW2-10,20,30,60	-
-	PROXIMITY SWITCH KI5084(DC24V) (MJ.CODE25569)	JCW2-10,20,30,60	-
118673	CAPACITIVE SENSOR KI5084, DC24V (IFM)	JCW2-I-05	-
118674	CABEL WITH CONNECTOR EVC004, L=2M (IFM)	JCW2-I-05	-

Chiller



AIR REGULATOR

CODE NO.	PART NAME	MACHINE MODEL	PRICE (THB)
-	AIR FILTER REGULATOR AW20-02BE (SMC)	JCW2-i-05	-
107226	AIR FILTER REGULATOR AFR2000-1 (AIRTAC)	JCW2-10,20	-
101313	AIR FILTER REGULATOR AW20-02BG-A (SMC)	JCW2-30,60	-

Blender



JL U-PACKING

CODE NO.	PART NAME	MACHINE MODEL	PRICE (THB)
100729	JL U-PACKING (BLACK) DWG.506054	JCW2-I-05	-

Granulator



BLOWER

CODE NO.	PART NAME	MACHINE MODEL	PRICE (THB)
100173	RING BLOWER RB40-620 AC200-240/380-440V, 50Hz/60Hz (HO-HSING)	JCW2	-
115443	RING BLOWER RB50-620 AC200-240/380-440V, 50/60Hz (HO-HSING)	JCW2-I-05	-

Solution & Option Parts



LEVEL SWITCH

CODE NO.	PART NAME	MACHINE MODEL	PRICE (THB)
100842	LEVEL SWITCH HL-400 L-85mm AC200V.	-	-
101051	LEVEL SWITCH HL-400H L=85mm AC200, 220V (TOWA)	-	-

ACRYLIC COVER

CODE NO.	PART NAME	MACHINE MODEL	PRICE (THB)
-	ACRYLIC COVER (MJ.CODE26092)	JCW2-i-05	-



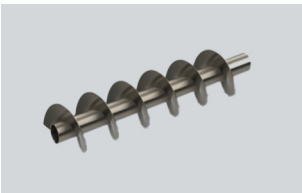
COMPACT CYLINDER

CODE NO.	PART NAME	MACHINE MODEL	PRICE (THB)
-	COMPACT CYLINDER : SSD-KL-16-50-N-CB-Y (CKD)	JCW2-i-05	-
109040	COMPACT CYLINDER CDQSKB25-50D (SMC)	JCW2	-
110686	COMPACT CYLINDER CQ2B40-25D (SMC)	JCW2	-



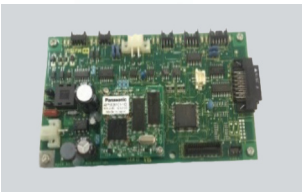
SPEED CONTROLLER

CODE NO.	PART NAME	MACHINE MODEL	PRICE (THB)
122402	SPEED CONTROLLER AS1201F-M5-04A (SMC)	JCW2-i-05	-
107236	FITTING APL4-M5 (AIRTAC)	JCW2-i-05	-
105377	SPEED CONTROLLER AS1201F-M05 -06SA	JCW2	-
101620	SPEED CONTROLLER AS2201F-01-06SA (SMC)	JCW2	-



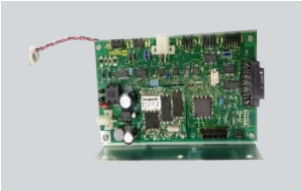
SCREW FEEDER

CODE NO.	PART NAME	MACHINE MODEL	PRICE (THB)
-	SCREW FEEDER SF 25 ITO	JCW2-i-05	-
-	SCREW FEEDER SF 40 ITO	JCW2-i-05	-
115580	SCREW FEEDER SF 50 ITO	JCW2-i-05	-



Controller GK1 I/O

CODE NO.	PART NAME	MACHINE MODEL	PRICE (THB)
114929	CONTROLLER GK1-I/O16 (MJ code 21258)	JCW2-10,20	-



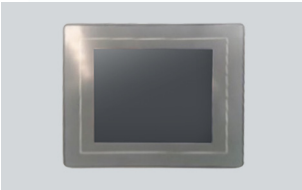
Controller GK1-CPU

CODE NO.	PART NAME	MACHINE MODEL	PRICE (THB)
114927	CONTROLLER GK1-CPU (MJ code 21256)	JCW2-10,20	-



BATTERY

CODE NO.	PART NAME	MACHINE MODEL	PRICE (THB)
122686	BATTERY ER3V 3.6V (TOSHIBA) (FOR JCW2)	JCW2-10,20	-
-	BATTERY BACKUP : AFPX-BATT (PANASONIC)	JCW2-10,20	-



TOUCH PANEL

CODE NO.	PART NAME	MACHINE MODEL	PRICE (THB)
114923	PANEL TS2060I-U003 With RUBBER C-30-CS-9-EP-UL	JCW2	-

Dryer

Conveyer

Temperature
Controller

Chiller

Blender

Granulator

Solution &
Option Parts

Dryer

Conveyer

Temperature
Controller

Chiller

Blender

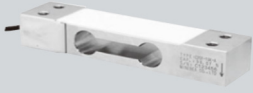
Granulator

Solution &
Option Parts



LOADCELL

CODE NO.	PART NAME	MACHINE MODEL	PRICE (THB)
114930	DIGITAL INDICATOR CSD-582-76-S01	JCW2-i-05	-



TOUCH PANEL

CODE NO.	PART NAME	MACHINE MODEL	PRICE (THB)
109038	LOAD CELL C2G1-15K-F-1.5M (NMB)	JCW2-10,20, JCW2-i-05	-



CATCH CLIP

CODE NO.	PART NAME	MACHINE MODEL	PRICE (THB)
107201	CATCH CLIP C-1231-2-1 (TAKIGEN)	JCW2	-
100550	CATCH CLIP P-31 with ARM DWG.162800	JCW2-i-05	-



PROGRAMMABLE

CODE NO.	PART NAME	MACHINE MODEL	PRICE (THB)
121759	PROGRAMMABLE CONTROLLERS UNIT (PANASONIC) AFPG2543H (FPG-C32TH)	JCW2-i	-
-	PLC CPU UNIT AFP0HC32ET (PANASONIC)	JCW2-10,20	-
-	COMMUNICATION CASSETTES AFP0HCCS1M1 (PANASONIC)	JCW2-10,20	-
-	EXPANSIOON I/O UNIT AFP0RE32T (PANASONIC)	JCW2-10,20	-



DISCONNECTOR SWITCH

CODE NO.	PART NAME	MACHINE MODEL	PRICE (THB)
-	DISCONNECTOR SWITCH P1-32/EA/SVB (EATON)	JCW2-10, JCW2-i-05	-
-	DISCONNECTOR SWITCH P3-63/V/SVB (EATON)	JCW2-20	-