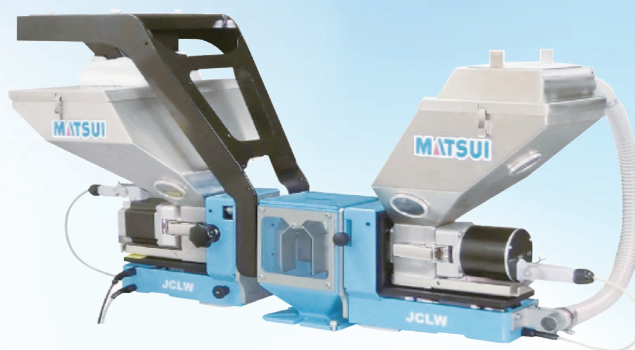




## SPARE PARTS Gravimetric Blender (Calculation Type)

# JCLW



Dryer

Conveyer

Temperature  
Controller

Chiller

Blender

Granulator

Solution &  
Option Parts



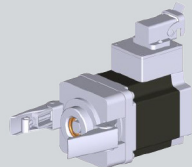
### CONTROLLER

CODE NO.	PART NAME	MACHINE MODEL	PRICE (THB)
-	MC30 CONTROLLER	-	-
-	MC18 CONTROLLER	-	-
-	MC12 CONTROLLER	-	-



### LOAD CELL UNIT

CODE NO.	PART NAME	MACHINE MODEL	PRICE (THB)
-	LOAD CELL UNIT 20 KG.	-	-
-	LOAD CELL UNIT 20 KG. (HIGH TEMP)	-	-
-	LOAD CELL UNIT 50 KG.	-	-
-	LOAD CELL UNIT 50 KG. (HIGH TEMP)	-	-



### MOTOR

CODE NO.	PART NAME	MACHINE MODEL	PRICE (THB)
-	MOTORS AND DOSING SYSTEMS : A20HTM	-	-
-	MOTORS AND DOSING SYSTEMS : A30HTM	-	-
-	MOTORS AND DOSING SYSTEMS : LT-HX	-	-
-	MOTORS AND DOSING SYSTEMS : LT-GLX	-	-
-	MOTORS AND DOSING SYSTEMS : LT-GX	-	-
-	MOTORS AND DOSING SYSTEMS : LT-A8	-	-
-	MOTORS AND DOSING SYSTEMS : LT-A10	-	-
-	MOTORS AND DOSING SYSTEMS : LT-A15	-	-
-	MOTORS AND DOSING SYSTEMS : LT-A20	-	-

Dryer

Conveyer

Temperature  
Controller

Chiller

Blender

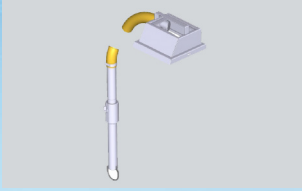
Granulator

Solution &  
Option Parts



### SOLENOID VALVE

CODE NO.	PART NAME	MACHINE MODEL	PRICE (THB)
-	SOLENOID VALVE FOR JCLW	-	-



### ME HOPPER LOADER

CODE NO.	PART NAME	MACHINE MODEL	PRICE (THB)
-	ME HOPPER LOADER UNIT : ME25 (40~125kg/h)	HOPPER 6 LITER	-
-	ME HOPPER LOADER UNIT : ME25 (40~125kg/h). with Cyclone dust filtering	HOPPER 6 LITER	-
-	ME HOPPER LOADER UNIT : ME38 (55~150kg/h)	HOPPER 12 LITER	-
-	ME HOPPER LOADER UNIT : ME38 (55~150kg/h). with Cyclone dust filtering	HOPPER 12 LITER	-