



SPARE PARTS Hot Air Dryer :

HD2



Dryer

Conveyer

Temperature
Controller

Chiller

Blender

Granulator

Solution &
Option Parts



TEMP. CONTROLLER

CODE NO.	PART NAME	MACHINE MODEL	PRICE (THB)
-	MODIFY TEMP.CONTROLLER UNIT MR-90HD-A TO MR16-AN-G1	HD2-10~300	-



BLOWER

CODE NO.	PART NAME	MACHINE MODEL	PRICE (THB)
100001	BLOWER RS-205 AC200/380V	HD2-10~15	-
100002	BLOWER RS-300 AC200/380V	HD2-25	-
100003	BLOWER RS-301 AC200/380V	HD2-50	-
117248	BLOWER RS-301 AC220/380V	HD2-50	-
107170	BLOWER RS-301 AC415V	HD2-50	-
100004	BLOWER RS-302 AC200/380V	HD2-75~100	-
100005	BLOWER NB-5 AC220/380V	HD2-150~200	-
102649	BLOWER NK-5 AC220/380V	HD2-250~300	-



DIFFUSER

CODE NO.	PART NAME	MACHINE MODEL	PRICE (THB)
100100	DIFFUSER DIA.150x135L DWG.131337	HD2-10~15	-
102725	DIFFUSER DIA.220x190L DWG.131411	HD2-25~50	-
100101	DIFFUSER DIA.260x245L DWG.131417	HD2-75~100	-
102817	DIFFUSER HD,MGD-150/200,MJ3-200 DWG.131359	HD2-150~300	-
100102	DIFFUSER STOPPER DWG.140686	HD2-10~15	-
100103	DIFFUSER STOPPER DWG.527187	HD2-25~100	-

Dryer

Conveyor

Temperature
Controller

Chiller

Blender

Granulator

Solution &
Option Parts

CATCH CLIP

CODE NO.	PART NAME	MACHINE MODEL	PRICE (THB)
100006	CATCH CLIP C-7-1	HD2-10~50	-
100008	CATCH CLIP C-1232-1 (SUS304)	HD2-75~300	-
100009	CATCH CLIP C-7-1 WITH ARM	HD2-150~300	-



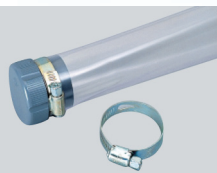
FELT PACKING

CODE NO.	PART NAME	MACHINE MODEL	PRICE (THB)
100754	FELT PACKING 20x2000xT3	HD2-10~150	-
100720	FELT PACKING 15x2000xT3	HD2-10~300	-
100756	FELT PACKING 30x2000xT3	HD2-75~300	-



EXHAUST FILTER

CODE NO.	PART NAME	MACHINE MODEL	PRICE (THB)
100301	EXHAUST FILTER 360x165xT18 DWG.734444	HD2-10~15	-
100300	EXHAUST FILTER 490x375xT18 DWG.734444	HD2-25~100	-
100299	EXHAUST FILTER 490x635xT18 DWG.734444	HD2-150~300	-



PVC HOSE

CODE NO.	PART NAME	MACHINE MODEL	PRICE (THB)
100016	PVC HOSE DIA.50.8MM x L300MM	HD2-10~300	-
115863	PVC SOCKET 1 1/4B (OUTER THREAD)	HD2-10~300	-
105247	PVC CAP 1 1/4B	HD2-10~300	-
101382	HOSE BAND 45-60MM.	HD2-10~300	-



SILICONE

CODE NO.	PART NAME	MACHINE MODEL	PRICE (THB)
100135	SILICONE 90x76xT10 DWG.140638	HD2- 10-100	-



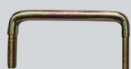
SILICONE SPONGE

CODE NO.	PART NAME	MACHINE MODEL	PRICE (THB)
100769	SILICONE SPONGE T3x20MM (WITHOUT GLUE)	HD2-75~300	-



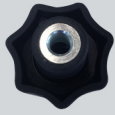
SILICONE GASKET

CODE NO.	PART NAME	MACHINE MODEL	PRICE (THB)
100137	SILICONE GASKET DIA.300 DWG.140640	HD2-10~15	-
102744	SILICONE DIA.423 DWG.140695	HD2-25~50	-



U-BOLT

CODE NO.	PART NAME	MACHINE MODEL	PRICE (THB)
100126	U-BOLT M8 DWG.140639	HD2-10~100	-



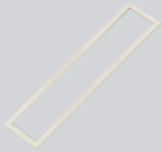
KNOB

CODE NO.	PART NAME	MACHINE MODEL	PRICE (THB)
100201	GRIP AND LOCKING KNOBS VCT-40B-M8	HD2-10~100	-



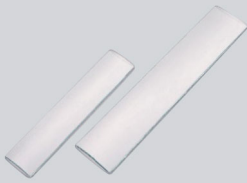
GLASS FRAME

CODE NO.	PART NAME	MACHINE MODEL	PRICE (THB)
100027	GLASS FRAME DWG.130030	HD2-10~15	-
100028	GLASS FRAME DWG.527189	HD2-25~300	-



GLASS FRAME PACKING

CODE NO.	PART NAME	MACHINE MODEL	PRICE (THB)
117234	GLASS HOLDER PACKING DWG.874326 (SILICONE RUBBER)	HD2-10~15	-
117242	GLASS HOLDER PACKING DWG.874383 (SILICON RUBBER)	HD2-25~300	-



GLASS

CODE NO.	PART NAME	MACHINE MODEL	PRICE (THB)
100023	GLASS 50x220xT3.0 R-150 DWG.140057 MJ.CODE 00493	HD2-10~15	-
100024	GLASS 65x315xT3.0 R200 DWG.527188 MJ.CODE 11127	HD2-25~50	-
103018	GLASS 65x315xT3.0 R266 DWG.527188	HD2-75~100	-
100297	GLASS 65x315xT3.0 R345 DWG.527188	HD2-150~200	-
100298	GLASS 65x315xT3.0 R409 DWG.527188	HD2-250~300	-



MAGNETIC CONTACTOR

CODE NO.	PART NAME	MACHINE MODEL	PRICE (THB)
107869	MAGNETIC CONTACTOR S-T10 AC200V (MITSUBISHI)	HD2-10~1000	-
118942	MAGNETIC CONTACTOR S-T20 AC200V (MITSUBISHI)	HD2-25~75	-
107878	MAGNETIC CONTACTOR S-T21 AC200V (MITSUBISHI)	HD2-75~100	-
107880	MAGNETIC CONTACTOR S-T25 AC200V (MITSUBISHI)	HD2-100	-
118585	MAGNETIC CONTACTOR S-T35 AC200V (MITSUBISHI)	HD2-150~300	-
118072	MAGNETIC CONTACTOR S-T50 AC200V (MITSUBISHI)	HD2-300~500	-
123072	MAGNETIC CONTACTOR S-T65CW AC200V (MITSUBISHI)	HD2-300~500/700	-
122282	MAGNETIC CONTACTOR S-T80 AC220V (MITSUBISHI)	HD2-400~700/900	-
115895	MAGNETIC CONTACTOR S-N125 AC200V (MITSUBISHI)	HD2-900~1100	-



THERMAL RELAY

CODE NO.	PART NAME	MACHINE MODEL	PRICE (THB)
107885	THERMAL RELAY TH-T18, 0.14-0.22A AC200~220V	HD2-10	-
107899	THERMAL RELAY TH-T18, 0.55-0.85A AC200~220V	HD2-25~100	-
107919	THERMAL RELAY TH-T18, 1.0-1.6A AC200~220V	HD2-150~200	-
107929	THERMAL RELAY TH-T18, 1.4-2A AC200~220V	HD2-250~300	-
107945	THERMAL RELAY TH-T18, 2.8-4.4A AC200~220V	HD2-400~500	-
107959	THERMAL RELAY TH-T18, 5.2-8A AC200~220V	HD2-700~900	-
107962	THERMAL RELAY TH-T18, 7-11A AC200~220V	HD2-1100	-
107883	THERMAL RELAY TH-T18, 0.1-0.16A AC380~415V	HD2-10~15	-
107894	THERMAL RELAY TH-T18, 0.28-0.42A AC380~415V	HD2-25~100	-
107908	THERMAL RELAY TH-T18, 0.7-1.1A AC380~415V	HD2-150~300	-
107929	THERMAL RELAY TH-T18, 1.4-2A AC380~415V	HD2-400~500	-
107945	THERMAL RELAY TH-T18, 2.8-4.4A AC380~415V	HD2-700~900	-

Dryer

Conveyer

Temperature
Controller

Chiller

Blender

Granulator

Solution &
Option Parts



SHEATH HEATER

CODE NO.	PART NAME	MACHINE MODEL	PRICE (THB)
116896	SHEATH HEATER 1.5KW,SUS (DELTA) DWG.131336 AC200V	HD2-10~15	-
116897	SHEATH HEATER 1.5KW,NICKEL (STAR/DELTA) DWG.131336 AC380/220V	HD2-10~15	-
116898	SHEATH HEATER 3.6KW,SUS (DELTA) DWG.536675 AC200V	HD2-25	-
116899	SHEATH HEATER 3.6KW,SUS (STAR/DELTA) DWG.536675 AC380/220V	HD2-25	-
116877	SHEATH HEATER 4.05KW,SUS (DELTA) DWG.536675 AC200V	HD2-50	-
116833	SHEATH HEATER 4.05KW,SUS (STAR/DELTA) DWG.536675 AC380/220V	HD2-50	-
116900	SHEATH HEATER 5.4KW,SUS (DELTA) DWG.536675 AC200V	HD2-75	-
116901	SHEATH HEATER 5.4KW,SUS (STAR/DELTA) DWG.536675 AC380/220V	HD2-75	-
116902	SHEATH HEATER 6.3KW,SUS (DELTA) DWG.536675 AC200V	HD2-100	-
116820	SHEATH HEATER 6.3KW, NICKEL (STAR/DELTA) DWG.536675 AC380/220V	HD2-100	-
116838	SHEATH HEATER 10.8KW,NICKEL (DELTA) DWG.536676 AC200V	HD2-150	-
116821	SHEATH HEATER 10.8KW, NICKEL (STAR) DWG.536676 AC380/220V	HD2-150	-
116906	SHEATH HEATER 12.42KW,NICKEL (DELTA) DWG.536676 AC200V	HD2-200	-
116830	SHEATH HEATER 12.42KW, NICKEL (STAR/DELTA) DWG.536676 AC380/220V	HD2-200	-
116909	SHEATH HEATER 17.1KW,NICKEL (DELTA) AC200V DWG.536677 AC200V	HD2-250	-
116910	SHEATH HEATER 17.1KW,NICKEL (STAR/DELTA) DWG.536677 AC380/220V	HD2-250	-
116911	SHEATH HEATER 19.8KW,NICKEL (DELTA) DWG.536677 AC200V	HD2-300	-
116822	SHEATH HEATER 19.8KW, NICKEL (STAR/DELTA) DWG.536677 AC380/220V	HD2-300	-



THERMOSTAT

CODE NO.	PART NAME	MACHINE MODEL	PRICE (THB)
103501	THERMOSTAT TR711/N220, M12 x P1 x L930	HD2-10~300	-
100010	THERMOSTAT BOX DWG.755849	HD2-10~300	-
101104	RING JOINT FOR TR711/N DWG.013795 (THERMOSTAT)	HD2-10~300	-
109253	RUBEER NBR DIA.12 x t5.6	HD2-10~300	-
100140	THERMOSTAT 3A-180C	HD2-15~500S,SF,R	-



THERMOCOUPLE

CODE NO.	PART NAME	MACHINE MODEL	PRICE (THB)
124331	THERMOCOUPLE TYPE K T0.65-DIA3.2 x 100 x 600L (NON-GROUNDED)	HD2-10~300	-
101137	RING JOINT RJ3.2x1/4B (THROUGH TYPE) (MJ CODE 08465)	HD2-10~300	-



FILTER FOR BLOWER

CODE NO.	PART NAME	MACHINE MODEL	PRICE (THB)
100017	FILTER FOR BLOWER RS-205 (150mm x t18) DWG.009752	HD2-10~15	-
100018	FILTER FOR BLOWER RS-300,301,302 (190MMxT18) DWG.009753	HDII-25~100	-
100144	FILTER BLOWER 280MMxT18	HDII-150~300	-



AUXILIARY FOR MAGNETIC

CODE NO.	PART NAME	MACHINE MODEL	PRICE (THB)
107990	AUXILIARY CONTACT UT-AX2(1a1b) (MITSUBISHI)	HD2-10~300	-