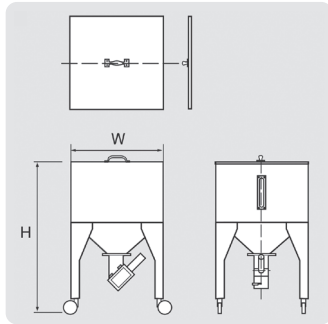


## Easy Cleaning, Multi-Function, Reliable



TA-95L



### TA

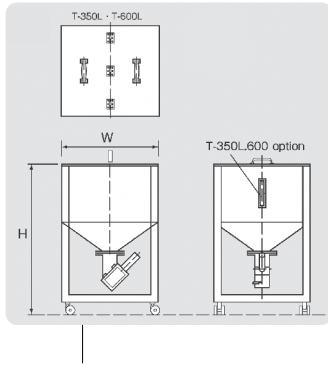
#### Standard Specification

Model	Unit	TA-50L	TA-95L	TA-175L	
Tank Dimension	W	mm	400	500	600
Frame Dimension	H	mm	942.5	942.5	1,000.8
Volume	L		55	95	175
	kg		33	57	105
Material		Stainless Steel			
Product Weight	kg	23	26	32	

※ Volume is that of when using virgin materials with bulk density of 0.6 g/cm<sup>3</sup>.



T-350L



### T

#### Standard Specification

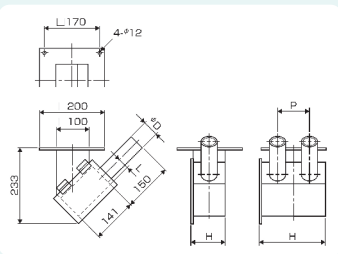
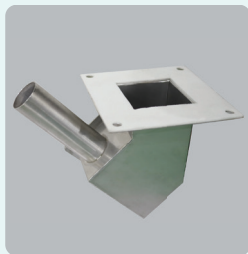
Model	Unit	T-260L	T-350L	T-600L	
Tank Dimension	W	mm	820	950	1,200
Frame Dimension	H	mm	1,039.5	1,039.5	1,139.5
Volume	L		260	350	600
	kg		156	210	360
Material		SUS304			
Product Weight	kg	48	55	75	

※ Volume is that of when using virgin materials with bulk density of 0.6 g/cm<sup>3</sup>.

- Lower level alarm • Alarm indicator • Magnet • Half open lid (TA-50/95/175L Only)

## Suction Box

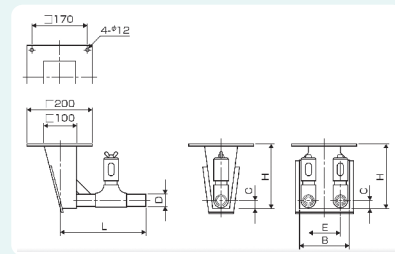
**SKB Nozzle type** (Option: 1-4 directions)



Model	Unit	SKB-38-1	SKB-40-1	SKB-50-1	SKB-38-2	SKB-40-2	SKB-50-2	
Dimension	∅ D	mm	48.6	60.5	76.3	48.6	60.5	76.3
	H	mm	100		200		250	
	L	mm	35	40	50	35	40	50
	P	mm	-		100		120	
Material		SUS304						

Option : 1-4 directions

**KKB Hose type** (Option: 1-3 directions)



Model	Unit	KKB-38-1	KKB-40-1	KKB-50-1	KKB-38-2	KKB-40-2	KKB-50-2	
Dimension	B	mm	-		150	180	210	
	C	mm	25	30	35	25	30	35
	D	mm	38	48.6	60.5	38	48.6	60.5
	E	mm	-		100	120	130	
	H	mm	200	250		200	250	
	L	mm	265.2	344.4	357	265.2	284.4	297

Option : 1-3 directions