

Dryer

Mold Dehumidifier

Conveyor

Temperature Controller

Blender

Granulator

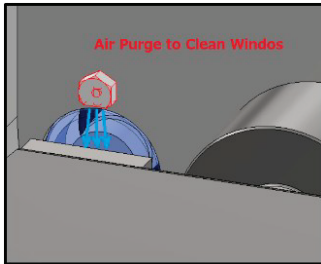
System & Others



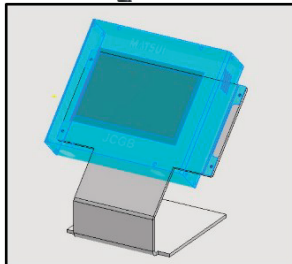
High precision weighing



Options



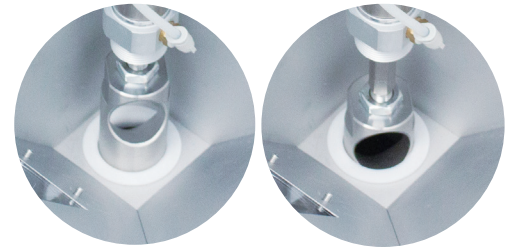
① Air purge
(for cleaning demand sensor window)



② HMI stand



③ Cylinder cover



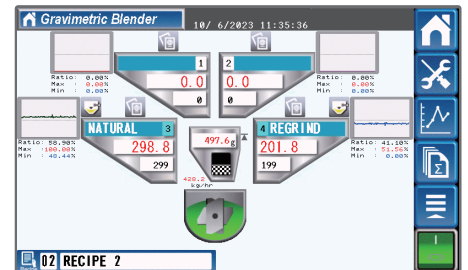
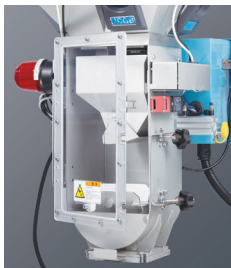
Drive the valve up and down to send the material



Demounting material hopper



Front Door



7 inch color touch panel

Standard Specification

| Model | | Unit | JCGB2-06 |
|---------------------------------------|-------------------------|----------------|--|
| Power Supply | Voltage | V | AC100~240V, 50/60Hz, 1 Phase |
| | Apparent Power | VA | 150 |
| Air Supply | Consumption | L/min | 3 |
| Maximum Measuring Capacity | | kg/h | 60 |
| Weighing method | | | Batch type mass weighing by loadcell |
| Number of Components | | Points | 2~4 |
| Volume per Batch | | kg | 0.5 |
| Material hopper | For color and additives | | A25 : φ 25 mm started valve |
| | For natural and regrind | | B40 : φ 40 mm vertical valve |
| Entire volume of material hopper | | L | 10 |
| Entire volume of the measuring hopper | | L | 2 |
| Discharging method | | | Flap Damper |
| Blending Section | Blending Method | | Mixing by rotary actuator Power source: air |
| | Effective Volume | L | 2 |
| Outer Dimension | W | mm | 560 |
| | D | mm | 560 |
| | H | mm | 710 |
| Product Weight | | kg | 50 |
| Standard features | Alarm | | Alarm indicator, Alarm buzzer |
| | Output signals | | Alarm signal (Closed during alarm, no-voltage contact) Running signal (Closed during operation, no-voltage contact) |
| | Operation panel | | 7-inch color touch panel |
| | Language | | Japanese, English, Chinese |
| | External memory | | USB memory |
| | Communication | | MODBUS / TCP |
| Remote operation | | VNC connection | |

Options

- HMI stand • Cylinder cover • Lower limit level meter • Air purge • Blow Gun • Pressure sensor
- Floor frame • Heat resistant specifications • Pressure feed • Discharge Chute