

# TA

## Material Tank



### Features

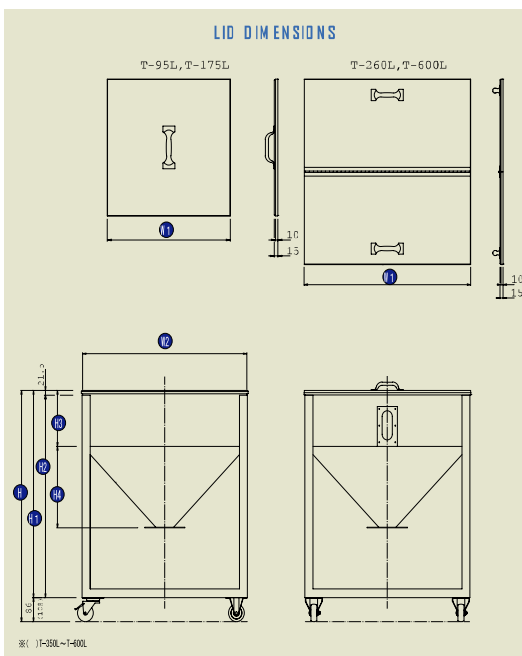
- Renewed design removes the horizontal angled bars from the bottom of the tank.
- The insertion and removal of receiving box when removing materials is made easier
- Cleaning is made easier as the pellets does not accumulate on the horizontal angled bars.
- Hanger for tank cover
- Do not have to worry where to place the cover when filling up materials.
- Bigger Caster
- Prevent caster from being stuck with pellets and prevent the floor from being scratched
- Casters of TA-50 and 95 are of  $\varnothing 65$ , made from nylon. Casters of TA-175 is now of  $\varnothing 75$ .

### Standard specifications

Model	Tank Dimensions			Lid Dimensions	Frame Dimensions			Capacity (L)	Weight (kg)
	W2	H3	H4	W1	H	H1	H5		
TA-50L	400	251.5	237.5	410	942.5	857.5	555	55	19
TA-95L	500	251.5	315	510	942.5	857.5	555	95	26
TA-175L	620	401.5	215	610	1000.8	905.8	465	175	32

# T

## Material Tank



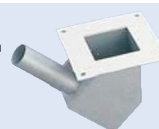
### Features

- Simple cleaning and maintenance.
- Casters to facilitate ease of location.
- SUS construction giving excellent resistance to corrosion.
- The two-port or three\*port vacuum box, is available as an optional item.
- Size from 50 kg. to 6,000 kg. available.

### Standard specifications

Model	Tank dimensions			Lid dimensions	Frame dimensions	
	W2	H3	H4	W1	H1	H2
T-260L	820	250	365	830	980	960
T-350L	950	250	365	960	980	960
T-600L	1200	200	565	1210	1030	1010

吸引BOX Suction Box  
SKB  
(別売:1~3方向 Option: 1-3 directions)



固定式ノズル Stationary Nozzle  
KKB  
(別売:1~3方向 Option: 1-3 directions)

