

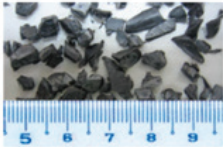
SMG-030



59-62 HRC

*Flat cutter structure reduces the price

Test Results



Material : PS
 Size : PS
 Max. diameter : \varnothing 6 mm
 Machine used : SMG-050
 Screen size : \varnothing 8

High-Speed Type Granulator

Option

Chute



Automatic door



Magnet



Hand throw hopper

Standard specifications

Model	Rotary Cutter	Stationary Cutter	Motor (kW)	Rotary rate (rpm)	Main Breaker user (Amp) 50Hz 3P		Size of runner chute (mm)	Main Body bore (Effective) (mm)	Outside Dimension (W x D x H) (mm)	Receiving box (L)	Weight (Kg)
			AC200V/300V 50 Hz		AC200V	AC380V					
SMG-030	3	2	2.2	472	20	16	240 X 245	240 X 170	495 x 758 x 1171	55.8	254
SMG-050	6	2	4.0	475	32	20	440 X 395	440 X 200	813 x 898 X 1480	93	500

Oblique Screen Stand \varnothing 8 mm., (\varnothing 6 mm., \varnothing 10mm.)

SMGL-050A Low Speed



SMGL2 Low Speed

SMGL

Low-Speed Type Granulator

Option

Chute



Automatic door



Magnet



Suction box :

KKB



SKB



Receiving box



Standard specifications

Model	Cutter (mm)	Motor (kW)	Rotary rate 50 Hz (rpm)	Main Breaker user (Amp) 50Hz 3P		Size of runner chute (mm)	Main body bore (effective) (mm)	Outside Dimension (W x D x H) (mm)	Suction box : KKB (L)	Weight (Kg)
		AC200/380V 50 Hz		AC200V	AC380V					
SMGL-050A	4 x 4	0.4	25	6	3	170 x 100 x 50	190 x 140	430 x 530 x 930	3	95
SMGL2-100A	5 x 5	0.75	25	10	6	330 x 230	252 x 225	872 x 420 x 1500	6	195
SMGL2-200A	5 x 6	1.5	25	16	10	378 x 308	380 x 328	1027 x 520 x 1555	16	275
SMGL-300A	6 x 7	2.2	25	20	16	470 x 405	396 x 407	1214 x 610 x 1648	18	400