






# SPARE PARTS

Hot Air Dryer :

## MGD

	HEATER INNER SHELL			
	CODE NO.	PART NAME	MACHINE MODEL	PRICE (THB)
	100113	HEATER INNER SHELL DWG.140635	MGD-15A	1,000
	100253	HEATER INNER SHELL DWG.011227	MGD-50A	1,500
100254	HEATER INNER SHELL DWG.041599	MGD-75,100A	1,700	

	HEATER SEPARATOR			
	CODE NO.	PART NAME	MACHINE MODEL	PRICE (THB)
	100065	HEATER SEPARATOR DWG.163684	MGD-15A	800
	100066	HEATER SEPARATOR DWG.163182	MGD-25~100A	1,200

	TERMINAL COVER			
	CODE NO.	PART NAME	MACHINE MODEL	PRICE (THB)
	114287	TERMINAL COVER DWG.140685	MGD-15A	450
	100125	TERMINAL COVER DWG.140690	MGD-25~100A	450
100199	TERMINAL COVER DWG.140654	MGD-250~300A	2,000	



HEATER BOX			
CODE NO.	PART NAME	MACHINE MODEL	PRICE (THB)
100239	HEATER BOX DWG.162904	MGD-15~25A	1,500
100241	HEATER BOX DWG.163183	MGD-50~75A	2,000



DRYING BLOWER			
CODE NO.	PART NAME	MACHINE MODEL	PRICE (THB)
100001	BLOWER RS-205 AC200/380V (AKAMATSU DENKI)	MGD-15A	15,000
100003	BLOWER RS-301 AC200/380V (AKAMATSU DENKI)	MGD-25~50A	17,000
100004	BLOWER RS-302 AC200/380V (AKAMATSU DENKI)	MGD-75~100A	25,000
100005	BLOWER NB-5 AC220/380V 50/60HZ (NISHIMURA DENKI)	MGD-150~200A	45,000
102649	BLOWER NK-5 AC220/380V 50/60Hz (NISHIMURA DENKI)	MGD-200~300A	51,000



CONVEYING BLOWER			
CODE NO.	PART NAME	MACHINE MODEL	PRICE (THB)
100173	RING BLOWER RB40-620 AC220/380V (HO-HSING)	MGD-15~150A	10,000
115443	RING BLOWER RB50-620 AC220/380V (HO-HSING)	MGD-200~300A	15,000



FILTER FOR BLOWER			
CODE NO.	PART NAME	MACHINE MODEL	PRICE (THB)
100017	FILTER FOR BLOWER RS-205 (150mm x t18) DWG.009752	MGD-15A	75
100018	FILTER FOR BLOWER RS-300,301,302 (190MMxT18) DWG.009753	MGD-25~100A	125
100144	FILTER BLOWER 280MMxT18	MGD-150~300A	300



CARTRIDGE FILTER			
CODE NO.	PART NAME	MACHINE MODEL	PRICE (THB)
101253	CARTRIDGE FILTER MXF-16SP-G4 DWG.190682	MGD-15~300A	1,000



PUSH DAMPER UNIT			
CODE NO.	PART NAME	MACHINE MODEL	PRICE (THB)
109030	PUSH DAMPER UNIT (PD3-DIA.38) DWG. 028452	MGD-15~150A	18,000
109090	PUSH DAMPER UNIT (PD3-DIA.50) DWG.028452	MGD-200~300A	22,000

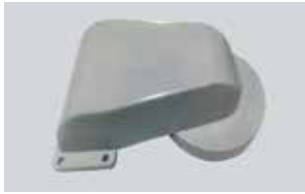


SLIDE DAMPER UNIT			
CODE NO.	PART NAME	MACHINE MODEL	PRICE (THB)
102652	SLIDE DAMPER UNIT DWG. 191355	MGD-15~150A	2,000
115378	SLIDE DAMPER UNIT DWG. A15274	MGD-200~300A	2,000



## EXHAUST FILTER

CODE NO.	PART NAME	MACHINE MODEL	PRICE (THB)
108509	EXHAUST FILTER 360x250xT18 DWG.734444	MGD-15~25A	200
100300	EXHAUST FILTER 490x375xT18 DWG.734444	MGD-50~100A	300
100299	EXHAUST FILTER 490x635xT18 DWG.734444	MGD-150~300A	500



## FILTER SEPARATOR

CODE NO.	PART NAME	MACHINE MODEL	PRICE (THB)
100063	FILTER SEPARATOR MGD-15,25 DWG.163987	MGD-15~25A	700
100108	FILTER SEPARATOR DWG.131344	MGD-50~100A	1,500
100110	FILTER SEPARATOR DWG. 586064	MGD-150~300A	1,700



## FILTER CASE

CODE NO.	PART NAME	MACHINE MODEL	PRICE (THB)
100256	FILTER CASE DWG.719099	MGD-15~25A	1,500
100104	FILTER CASE DWG.527191	MGD-50~100A	1,800
100188	FILTER CASE DWG.131345	MGD-150~300A	4,000



## FILTER CAP

CODE NO.	PART NAME	MACHINE MODEL	PRICE (THB)
100105	FILTER CAP DWG.140684	MGD-15~25A	260
100106	FILTER CAP DWG.140683	MGD-50~300A	400



## PVC HOSE

CODE NO.	PART NAME	MACHINE MODEL	PRICE (THB)
100016	PVC HOSE DIA.50.8MM x L300MM (TRANSPARENT)	MGD-15~300A	100



## CAP/SOCKET

CODE NO.	PART NAME	MACHINE MODEL	PRICE (THB)
100228	PVC SOCKET 2"	MGD-15~300A	50
100053	PVC CAP 2"	MGD-15~300A	150



## CYCLONE FILTER UNIT

CODE NO.	PART NAME	MACHINE MODEL	PRICE (THB)
104097	CYCLONE FILTER UNIT DIA.38mm.	MGD-15~50A	6,500
111485	CYCLONE FILTER UNIT DIA.63mm.	MGD-200~300A	6,500



## DUST HOPPER

CODE NO.	PART NAME	MACHINE MODEL	PRICE (THB)
109086	DUST HOPPER DWG.706713	MGD-15~300A	2,500



## 2-DIRECTION

CODE NO.	PART NAME	MACHINE MODEL	PRICE (THB)
117172	2-DIRECTION MATERIAL (2VN-DIA.38) With SOLENOID VALVE DWG.031208 *MAC	MGD-15~150A	15,000
117256	2-DIRECTION MATERIAL (2VN-DIA.63) With SOLENOID VALVE DWG.049314*MAC	MGD-200~300A	19,000



## SOLENOID VALVE

CODE NO.	PART NAME	MACHINE MODEL	PRICE (THB)
108994	SOLENOID VALVE 4V110-06-A-G (AC220V) (PS) (AIRTAC)	MGD-15~300A	900



## SOLENOID VALVE

CODE NO.	PART NAME	MACHINE MODEL	PRICE (THB)
105706	SOLENOID VALVE (SMC)SY3120-2G-C6-F2	MGD-15~150A	3,500



## COMPACT CYLINDER

CODE NO.	PART NAME	MACHINE MODEL	PRICE (THB)
117208	COMPACT CYLINDER CQSBS25C-W4842-25 (SMC)	MGD-15~150A	1,500
117210	COMPACT CYLINDER CQ2B32-W1T242-45DCZ (SPECIAL ROD) (SMC)	MGD-200~300A	1,200
116847	COMPACT CYLINDER CQ2B20-30DCM (SMC)	MGD-15~300A	800



## PISTON

CODE NO.	PART NAME	MACHINE MODEL	PRICE (THB)
103372	PISTON DIA.54 SUS304, SILICONE DWG.017777 (2VN-63)	MGD-15~300A	900
103373	PISTON DIA.40 (SUS,SILICONE) DWG.017785 (2VN-38)	MGD-15~300A	800



## THERMOCOUPLE

CODE NO.	PART NAME	MACHINE MODEL	PRICE (THB)
100433	THERMOCOUPLE DIA.3.2x100 x3m (CA) TYPE K (MJ CODE 10851)	MGD-15~300A	1,500
101137	RING JOINT RJ3.2x1/4B (THROUGH TYPE) (MJ CODE 08465)	MGD-15~300A	60



## THERMOSTAT

CODE NO.	PART NAME	MACHINE MODEL	PRICE (THB)
103501	THERMOSTAT TR711/N220, M12 x P1 x L930	MGD-15~300A	2,500
100010	THERMOSTAT BOX DWG.755849	MGD-15~300A	500
101104	RING JOINT FOR TR711/N DWG.013795 (THERMOSTAT)	MGD-15~300A	420
109253	RUBBER NBR DIA.12 x t5.6	MGD-15~300A	50



## GLASS

CODE NO.	PART NAME	MACHINE MODEL	PRICE (THB)
100023	GLASS 50x220xT3.0 R-150 DWG.140057	MGD-15~25A	500
100024	GLASS 65x315xT3.0 R200 DWG.527188	MGD-50A	570
103018	GLASS 65x315xT3.0 R266 DWG.527188	MGD-75~100A	600
100297	GLASS 65x315xT3.0 R345 DWG.527188	MGD-150~200A	1,000
100298	GLASS 65x315xT3.0 R409 DWG.527188	MGD-250~300A	1,000



## GLASS FRAME

CODE NO.	PART NAME	MACHINE MODEL	PRICE (THB)
100027	GLASS FRAME DWG.130030	MGD-15~25A	200
100028	GLASS FRAME DWG.527189	MGD-50~300A	300



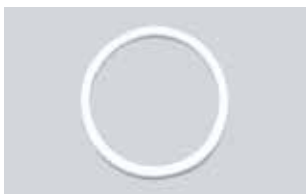
## GLASS FRAME PACKING

CODE NO.	PART NAME	MACHINE MODEL	PRICE (THB)
100029	GLASS FRAME PACKING DWG.140063 (EPT RUBBER)	MGD-15~25A	50
100030	GLASS FRAME PACKING DWG.140064 (EPT RUBBER)	MGD-50~300A	95



## HOPPER LID

CODE NO.	PART NAME	MACHINE MODEL	PRICE (THB)
102946	HOPPER LID SETTING JC-3, 6 DWG.190867	MGD-15~25A	1,500
107722	HOPPER LID SETTING JC-3, 6 DWG.039522	MGD-50~75A	1,500
114041	HOPPER LID SETTING JC-3, 6 DWG.044679	MGD-100~150A	2,000
102902	HOPPER LID SETTING JC-9,18 DWG.190872	MGD-200A	6,000
112355	HOPPER LID SETTING JC-9,18 DWG.190873	MGD-250~300A	7,500



## HOPPER LID PACKING

CODE NO.	PART NAME	MACHINE MODEL	PRICE (THB)
100770	HOPPER LID PACKING DWG.866548	MGD-15~25A	300
100771	HOPPER LID PACKING DWG.866549	MGD-50~75A	400
100772	HOPPER LID PACKING DWG.866550	MGD-100~150A	500



DIFFUSER			
CODE NO.	PART NAME	MACHINE MODEL	PRICE (THB)
100246	DIFFUSER DWG.163565	MGD-15~25A	2,000
100247	DIFFUSER DWG.163589	MGD-50~75A	2,000
100248	DIFFUSER DWG.B26016	MGD-100~150A	2,000
102817	DIFFUSER DWG.131359	MGD-200A	5,000
100181	DIFFUSER with CONNECTION PORT DWG.131377,131366	MGD-250~300A	7,200



DIFFUSER STOPPER			
CODE NO.	PART NAME	MACHINE MODEL	PRICE (THB)
102963	DIFFUSER STOPPER DWG. 022175	MGD-15~25A	30
100103	DIFFUSER STOPPER DWG.527187	MGD-50~150A	60



KNOB			
CODE NO.	PART NAME	MACHINE MODEL	PRICE (THB)
106151	KNOB NUTS M6	MGD-15~300A	70



CATCH CLIP			
CODE NO.	PART NAME	MACHINE MODEL	PRICE (THB)
100550	CATCH CLIP P-31 with ARM DWG.162800 (JC)	MGD-15~300A	100



CATCH CLIP			
CODE NO.	PART NAME	MACHINE MODEL	PRICE (THB)
100009	CATCH CLIP C-7-1 WITH ARM (TOP LID)	MGD-15~300A	100



CATCH CLIP			
CODE NO.	PART NAME	MACHINE MODEL	PRICE (THB)
107723	CATCH CLIP C-7-2 (SPCC) (TAKIGEN) (PANEL DOOR)	MGD-15~300A	200



CATCH CLIP			
CODE NO.	PART NAME	MACHINE MODEL	PRICE (THB)
100007	CATCH CLIP C-1232-2(HOPPER DOOR)	MGD-15~300A	200



JL U-PACKING			
CODE NO.	PART NAME	MACHINE MODEL	PRICE (THB)
100729	JL U-PACKING (BLACK) DWG.506054	MGD-15~300A	300



## TEMP. CONTROLLER

CODE NO.	PART NAME	MACHINE MODEL	PRICE (THB)
101002	TEMP. CONTROLLER G2422	MGD-15~300A	15,000



## RELAY FOR TEMP. CONTROLLER

CODE NO.	PART NAME	MACHINE MODEL	PRICE (THB)
103822	RELAY : G6D-1A-ASI DC-12V (OMRON) for TEMP.G2422	MGD-15~300A	500



## ELECTRIC CONNECTOR

CODE NO.	PART NAME	MACHINE MODEL	PRICE (THB)
100825	ELECTRIC CONNECTOR NJC-204ADM (NANABOSHI) (MJ CODE 01275)	MGD-15~300A	670



## ELECTRIC CONNECTOR

CODE NO.	PART NAME	MACHINE MODEL	PRICE (THB)
100826	ELECTRIC CONNECTOR NJC-204PF (NANABOSHI) MJ.CODE 01270	MGD-15~300A	550



## NYLON CONNECTOR

CODE NO.	PART NAME	MACHINE MODEL	PRICE (THB)
108141	CONNECTOR COVER C1396-060 (3P) MJ.CODE 12016	MGD-15~300A	10



## MAGNETIC CONTACTOR

CODE NO.	PART NAME	MACHINE MODEL	PRICE (THB)
107869	MAGNETIC CONTACTOR S-T10 (MITSUBISHI) AC220V	-	500
107873	MAGNETIC CONTACTOR S-T12 (MITSUBISHI) AC220V	-	700
107878	MAGNETIC CONTACTOR S-T21 (MITSUBISHI) AC220V	-	1,200
107880	MAGNETIC CONTACTOR S-T25 (MITSUBISHI) AC220V	-	1,500
102201	MAGNETIC CONTACTOR SN-35 (MITSUBISHI) AC220V	-	2,500
103809	MAGNETIC CONTACTOR S-N50 (MITSUBISHI) AC220V	-	2,500
109402	MAGNETIC CONTACTOR S-N65 (MITSUBISHI) AC220V	-	3,000



## AIR FILTER REGULATOR

CODE NO.	PART NAME	MACHINE MODEL	PRICE (THB)
108222	AIR FILTER REGULATOR AFR1500(PS) (AIRTAC)	-	550



THERMAL RELAY			
CODE NO.	PART NAME	MACHINE MODEL	PRICE (THB)
107885	THERMAL RELAY TH-T18, 0.14-0.22A (MITSUBISHI)	MGD-10	600
107883	THERMAL RELAY TH-T18, 0.1-0.16A (MITSUBISHI)	MGD-15	600
107899	THERMAL RELAY TH-T18, 0.55-0.85A (MITSUBISHI)	MGD-25~50	600
100876	THERMAL RELAY TH-N12, 0.4-0.6A (MITSUBISHI)	MGD-75~100	1,100
107919	THERMAL RELAY TH-T18, 1.0-1.6A (MITSUBISHI)	MGD-150~200	600
107929	THERMAL RELAY TH-T18, 1.4-2A (MITSUBISHI)	MGD-250~200	600



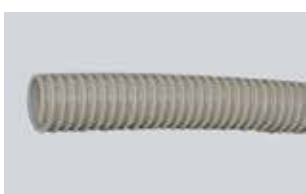
SOLID STATE RELAY			
CODE NO.	PART NAME	MACHINE MODEL	PRICE (THB)
102244	SOLID STATE RELAY G3NA-210B I/P (OMRON) AC200~240V	-	1,200
103747	SOLID STATE RELAY G3NA-410B I/P (OMRON) AC100-240V	-	2,500
102239	SOLID STATE RELAY G3NA-220B I/P (OMRON) AC200~240V	-	1,200
100994	SOLID STATE RELAY G3NA-420B I/P (OMRON) AC100-240V	-	2,100
100985	SOLID STATE RELAY G3NA-240B I/P (OMRON) AC200~240V	-	2,200
101095	SOLID STATE RELAY SS301-5Z-A4 (FUJI ELEC.) (MJ CODE 20574) AC200V	-	3,500
101096	SOLID STATE RELAY SS501-5Z-A4 (FUJI ELEC.) AC200V	-	5,000
116618	SOLID STATE RELAY G3NA-440B-2 I/P (OMRON) AC100-240V	-	3,500



HAND VALVE			
CODE NO.	PART NAME	MACHINE MODEL	PRICE (THB)
112000	HAND VALVE AHVFF06-04B (AIRTAC)	-	350



TIFLEX HOSE			
CODE NO.	PART NAME	MACHINE MODEL	PRICE (THB)
107754	TIFLEX HOSE ANTISTATIC W Type DIA.38mm (TIGERS POLYMER)(W-38)(20M.)	-	8,000
116599	TIFLEX HOSE ANTISTATIC W Type DIA.50mm (TIGERS POLYMER)(W-50)(20M.)	-	11,000
103756	TIFLEX HOSE ANTISTATIC W Type DIA.65mm (TIGERS POLYMER)(W-65)(20M.)	-	15,600

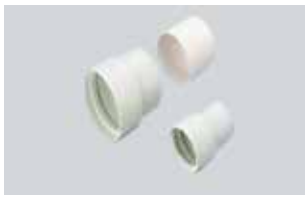


GL HOSE			
CODE NO.	PART NAME	MACHINE MODEL	PRICE (THB)
100573	GL HOSE DIA. 38.10 mm.(20M.)	-	2,000
100574	GL HOSE DIA. 63.50 mm.(20M.)	-	4,600



HOSE CLAMP			
CODE NO.	PART NAME	MACHINE MODEL	PRICE (THB)
101385	HOSE CLAMP (FOR PVC HOSE 38.1mm.)	-	12
101387	HOSE CLAMP (FOR PVC HOSE 63.50mm.)	-	20





## HOSE COUPLING

CODE NO.	PART NAME	MACHINE MODEL	PRICE (THB)
100580	HOSE COUPLING 38MM	-	70
100581	HOSE COUPLING 63MM	-	100



## SUCTION PIPE

CODE NO.	PART NAME	MACHINE MODEL	PRICE (THB)
100602	SUCTION PIPE 38 MM (AL) DWG.038127	-	1,600
100603	SUCTION PIPE 50 MM (AL) DWG.038128	-	2,500
100604	SUCTION PIPE 63 MM (AL) DWG.038129	-	2,800
100706	SUCTION PIPE 38 MM (SUS) DWG.041241	-	2,500
100612	SUCTION PIPE 50 MM (SUS) DWG.041242	-	4,000
115192	SUCTION PIPE 63 MM (SUS) DWG.041243	-	4,200



## SHEATH HEATER

CODE NO.	PART NAME	MACHINE MODEL	PRICE (THB)
116896	SHEATH HEATER 1.5KW,SUS (DELTA) DWG.131336 AC200V	MGD-15A	4,000
116897	SHEATH HEATER 1.5KW,NICKEL (STAR/DELTA) DWG.131336 AC380/220V	MGD-15A	4,000
116875	SHEATH HEATER 2.52KW,NICKEL (STAR) DWG.131336 AC415V	MGD-15A	6,500
116898	SHEATH HEATER 3.6KW,SUS (DELTA) DWG.536675 AC200V	MGD-25A	6,000
116899	SHEATH HEATER 3.6KW,SUS (STAR/DELTA) DWG.536675 AC380/220V	MGD-25A	6,000
116879	SHEATH HEATER 4.78KW,SUS (STAR) DWG.536675 AC415V	MGD-25A	7,500
116877	SHEATH HEATER 4.05KW,SUS (DELTA) DWG.536675 AC200V	MGD-50A	7,500
116833	SHEATH HEATER 4.05KW,SUS (STAR/DELTA) DWG.536675 AC380/220V	MGD-50A	7,500
116900	SHEATH HEATER 5.4KW,SUS (DELTA) DWG.536675 AC200V	MGD-75A	7,200
116901	SHEATH HEATER 5.4KW,SUS (STAR/DELTA) DWG.536675 AC380/220V	MGD-75A	7,200
116902	SHEATH HEATER 6.3KW,SUS (DELTA) DWG.536675 AC200V	MGD-100A	9,500
116820	SHEATH HEATER 6.3KW, NICKEL (STAR/DELTA) DWG.536675 AC380/220V	MGD-100A	9,500
116838	SHEATH HEATER 10.8KW,NICKEL (DELTA) DWG.536676 AC200V	MGD-150A	19,200
116821	SHEATH HEATER 10.8KW, NICKEL (STAR) DWG.536676 AC380/220V	MGD-150A	19,200
116906	SHEATH HEATER 12.42KW,NICKEL (DELTA) DWG.536676 AC200V	MGD-200A	19,200
116830	SHEATH HEATER 12.42KW, NICKEL (STAR/DELTA) DWG.536676 AC380/220V	MGD-200A	19,200
116909	SHEATH HEATER 17.1KW,NICKEL (DELTA) AC200V DWG.536677 AC200V	MGD-250A	30,000
116910	SHEATH HEATER 17.1KW,NICKEL (STAR/DELTA) DWG.536677 AC380/220V	MGD-250A	26,500
116911	SHEATH HEATER 19.8KW,NICKEL (DELTA) DWG.536677 AC200V	MGD-300A	27,500
116822	SHEATH HEATER 19.8KW, NICKEL (STAR/DELTA) DWG.536677 AC380/220V	MGD-300A	29,200